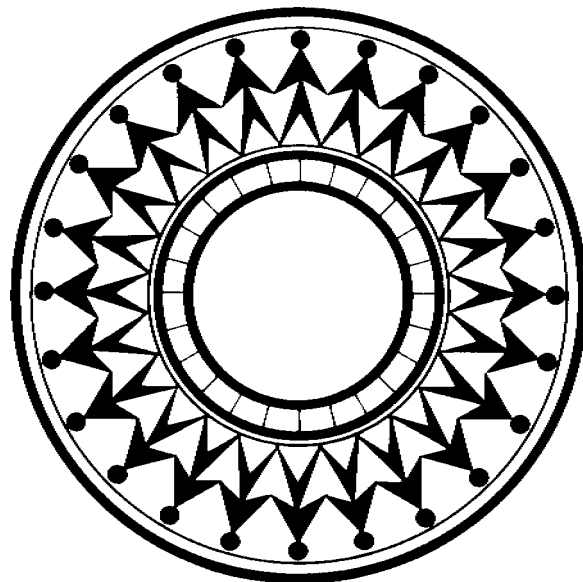


THIS IS THE NCANDS 1995-1997 GUIDE

Initial Release: February, 2000
Last Revised: February 21, 2000

**NATIONAL CHILD ABUSE AND
NEGLECT DATA SYSTEM
(NCANDS)
DETAILED CASE DATA
COMPONENT, 1995-1997**

**NDACAN Dataset Number 75
User's Guide**



National Data Archive on Child Abuse and Neglect
Family Life Development Center
Cornell University
Ithaca, New York 14853-4401
607-255-7799
DataCAN@cornell.edu
www.ndacan.cornell.edu

Initial Release: February, 2000
Last Revised: February 21, 2000

**NATIONAL CHILD ABUSE AND
NEGLECT DATA SYSTEM
(NCANDS)
DETAILED CASE DATA
COMPONENT, 1995-1997**

Data Provided by

Children's Bureau
Administration on Children, Youth & Families
330 C Street, S.W.
Washington, DC 20204
Contract number ACF-105-95-1849

Funded by

Children's Bureau
Administration on Children, Youth and Families,
U.S. Department of Health and Human Services

Distributed by

National Data Archive on Child Abuse and Neglect

User's Guide written by

National Data Archive on Child Abuse and Neglect
in collaboration with Walter R. McDonald & Associates, Inc.

PREFACE

The data for the *National Child Abuse and Neglect Data System, Detailed Case Data Component, Calendar Years 1995-1997*, have been given to the National Data Archive on Child Abuse and Neglect for public distribution by the Children's Bureau. Funding for the project was provided by the Children's Bureau within the U.S. Department of Health and Human Services.

ABSTRACT

The National Child Abuse and Neglect Data System (NCANDS) is a voluntary national data collection and analysis system created in response to the requirements of the Child Abuse Prevention and Treatment Act (Public Law 93-247) as amended. The NCANDS consists of two components. The Summary Data Component (SDC) is a compilation of key aggregate child abuse and neglect statistics from all states, including data on reports, investigations, victims, and perpetrators. The Detailed Case Data Component (DCDC) is a compilation of case-level information from those child protective services agencies able to provide electronic child abuse and neglect records.

Eleven States archived data for the DCDC in 1995. The participating states were Colorado, Delaware, Florida, Kentucky, Massachusetts, Missouri, North Carolina, Texas, Utah, and Vermont. In 1996, eight states provided DCDC data. These states were Colorado, Delaware, Florida, Massachusetts, North Carolina, Oklahoma, Utah, and Vermont. Nine states provided DCDC data in 1997. The participating states were Colorado, Florida, Kentucky, Massachusetts, Oklahoma, Rhode Island, Utah, Vermont and Wyoming. The files that are publicly available consist of selected and derived variables from years 1995-1997 NCANDS DCDC records from the participating states. These files are referred to as the NCANDS DCDC 1995-1997 (NCANDS 1995-1997). Subsequent NCANDS DCDC data files will be available in the future.

The NCANDS DCDC 1995-1997 consists of 54 data files – two from each participating state for each year. One of the two files per state contains 14 variables and includes characteristics of all children included in a report of alleged maltreatment. Characteristics of the report such as the report source and report disposition are also included in this file. The second file for each state contains 62 variables but is limited to children who were identified as victims within the respective report. A child was classified as a victim and included in this file only if a substantiated or indicated maltreatment was reported for the child. In addition to basic information concerning the report and the child, this file of child victims also contains information concerning the type of maltreatment, the support services provided to the family, and special problems that were identified for the child, caretaker, or family. Neither of the files contains data on the alleged perpetrators, and reports of child fatalities have been excluded from both files. Files on alleged perpetrators and child fatalities are in preparation for future release.

While the data from the participating in the NCANDS DCDC 1995-1997 states do not constitute a statistically representative sample of maltreated children in the United States, they show distributions similar to those found in studies using national data. Furthermore, they provide an important opportunity to answer many questions regarding child maltreatment cases that are known to child protective services.

ACKNOWLEDGMENT OF ASSISTANCE

All manuscripts that use data made available through the National Data Archive on Child Abuse and Neglect should acknowledge this fact as well as identify the original collector of the data. Users of the NCANDS DCDC 1995-1997 data files are urged to follow some adaptation of the following statement:

The data utilized in this publication were made available by the National Data Archive on Child Abuse and Neglect, Cornell University, Ithaca NY; and have been used by permission. Data from the National Child Abuse and Neglect Data System were supplied by state child protective service agencies to the Children's Bureau, the Administration of Children, Youth and Families, U.S. Department of Health and Human Services. Funding for NCANDS was provided by the Children's Bureau, U.S. Department of Health and Human Services. Technical support on NCANDS is provided under contract to the Children's Bureau by Walter R. McDonald & Associates, Inc. Neither the participating state agencies; Walter R. McDonald & Associates, Inc.; the Children's Bureau, the Archive, Cornell University, or its agents or employees bear any responsibility for the analyses, opinions, or interpretations presented here.

INFORMATION ABOUT THE USE OF ARCHIVAL RESOURCES

In order to provide funding agencies with essential information about the use of NDACAN resources and to facilitate the exchange of information about research activities among data users and contributors, each user of these data is expected to send two copies of any completed manuscript, thesis abstract, or reprint to the National Data Archive on Child Abuse and Neglect, Cornell University, Family Life Development Center, MVR Hall, Ithaca, New York 14853-4401.

In addition, users of the NCANDS DCDC 1995-1997 must comply with all conditions of the NCANDS Terms of Use Agreement. One of these conditions requires that users submit manuscripts to the NCANDS Federal Project Officer prior to publication. See the NCANDS Terms of Use Agreement for details.

TABLE OF CONTENTS

OVERVIEW	1
Introduction	1
Background	1
Data Collection.....	2
NCANDS DCDC DATA FILES.....	4
Description of the Data Files.....	4
J and K Files.....	4
Report and Child Identification Codes.....	6
Aggregating the Data Files by Report or Child.....	8
Conducting Analyses with the NCANDS DCDC	8
State Classification of the Disposition of Investigations	8
Report Substantiation	8
Report and Child Identifiers.....	9
Missing Data	9
BIBLIOGRAPHY	10
Documents Produced From the NCANDS.....	10
Publications Related to the NCANDS	11
APPENDIX A	13
NCANDS DCDC Data Elements.....	13
APPENDIX B.....	17
Sample Mapping Form for the NCANDS DCDC.....	17
APPENDIX C	21
Coding Information for the ‘J’ Files	23
APPENDIX D	27
Coding Information for the ‘K’ Files	29
APPENDIX E.....	43
Computational Rules for the NCANDS 1995-1997 Variables	45
APPENDIX F.....	53
Introduction to the NCANDS DCDC.....	53
APPENDIX G	65
Using the NCANDS DCDC Data Files.....	67
APPENDIX H	73
NCANDS Detailed Case Data Component Glossary.....	75

OVERVIEW

Introduction

The National Child Abuse and Neglect Data System (NCANDS) is the primary source of national information on abused and neglected children known to state child protective services agencies. Findings from the NCANDS are based on aggregate data from all states and automated case-level data from a number of states. The first annual report based on the findings of the NCANDS was for reports of child abuse and neglect received in 1990.

Background

The National Center on Child Abuse and Neglect (NCCAN) established the National Child Abuse and Neglect Data System (NCANDS) to respond to a requirement in the Child Abuse Prevention and Treatment Act (Public Law 93-247) as amended. Section 105(b)(1) called for the creation of a coordinated national data collection and analysis program, both universal and case-specific in scope. In 1988, the NCCAN embarked on a collaborative effort with the states to collect and analyze annual child abuse and neglect data from child protective services agencies in the 50 states, the District of Columbia, the territories, and the Armed Services.

A state Advisory Group helped to identify data items and definitions that present a national profile of child maltreatment. Subsequently, the state representatives assisted in the pilot testing and development of the NCANDS. The state Advisory Group continues to play an important role in the implementation of the NCANDS.

The design of the NCANDS was guided by the needs in the field of child welfare and the capabilities of state data systems to produce the information. The resulting two-pronged approach of the NCANDS allows for aggregate data to be collected through the SDC and case-level data to be collected through the DCDC. Brief descriptions of the SDC and DCDC follow:

The Summary Data Component

The Summary Data Component (SDC) is a compilation of key aggregate child abuse and neglect statistics supplied by all states on an annual basis. The SDC includes the number of reports of alleged maltreatment, dispositions of investigations of alleged child abuse and neglect, and data on the victims and perpetrators of substantiated and indicated maltreatment.

The Detailed Case Data Component

The DCDC is a compilation of case-level information from child protective services agencies on children who are the subjects of reports alleging child maltreatment. The DCDC permits more detailed analysis of state child abuse and neglect data than is possible with the aggregate data in the SDC. The DCDC contains 19 data elements on reports of alleged maltreatment and characteristics of children who are the subjects of

these reports. An additional 98 data elements are collected on the victims of maltreatment, including information on types of substantiated or indicated maltreatment, child disabilities, family problems, services provided to victims, and characteristics of perpetrators. The archived data, for NCANDS 1995 -1997 DCDC are from the states represented in Table 1.

Table 1. DCDC Archiving States, 1995-1997

States	1995	1996	1997
Colorado	X	X	X
Delaware	X	X	
Florida	X	X	X
Kentucky	X		X
Massachusetts	X	X	X
Missouri	X		
North Carolina	X	X	
Oklahoma		X	X
Rhode Island			X
Texas	X		
Utah	X	X	X
Vermont	X	X	X
Wyoming			X
Total	10 states	8 states	9 states

Data Collection

Figure 1.1 depicts the steps in the DCDC data collection and analysis process. After receiving the DCDC guidelines and mapping forms, each state maps its data elements to the DCDC record. Appendix A lists the data elements in the NCANDS DCDC. The DCDC includes data elements on reports of alleged maltreatment, characteristics of children who are the subject of these reports, types of substantiated or indicated maltreatments, child disabilities and problems, caretaker characteristics, services provided to victims and characteristics of perpetrators.

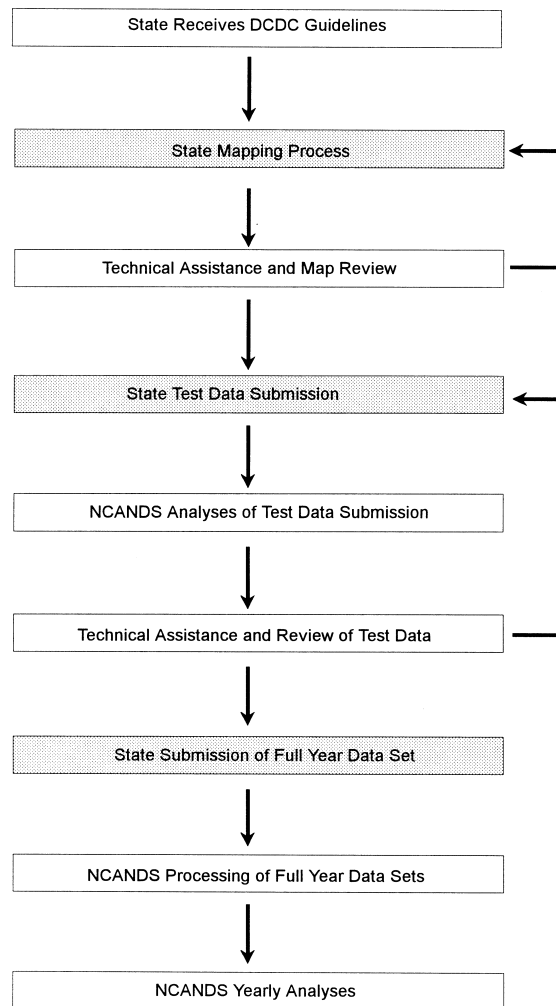
The Mapping Process

In order for states to transfer data to NCANDS, it is necessary to define a mapping (or conversion) procedure for transferring data from the state's coding scheme into the NCANDS coding scheme. Appendix B contains a blank example of Parts 1 & 2 of the mapping forms that states use to define their mapping process. Part 1 forms are completed for each data element and Part 2 forms are completed for all data elements holding coded values. Part 1 includes sections permitting the state to outline the logic associated with their field construction and to add commentary summarizing any unique issues. Part 2 provides a summary of the state codes associated with the assignment of each NCANDS code.

Completed mapping forms are available in the form of electronic Word documents from the National Data Archive on Child Abuse and Neglect. Please contact the Archive directly if you need maps.

Once a state maps its data elements to the DCDC record, the NCANDS Technical Team reviews the results and provides feedback to the state. The state addresses any issues that result from the review and makes necessary adjustments to the mapping forms. The state then develops the computer programs necessary to extract the DCDC data from its database and submits a test file for review.

Figure 1.1 The DCDC Data Collection Process



The test file is checked to confirm the accuracy of the submission. Once the Technical Team validates the test file, the results are shared with the state, and the state then submits a revised file containing all cases for the data collection year. The Technical Team then confirms that the final submission has been corrected of all of the systematic errors and/or logical inconsistencies that were identified in the test file.

NCANDS DCDC DATA FILES

Description of the Data Files

The NCANDS 1995-1997 files that are available consist of selected and derived variables from the NCANDS 1995-1997 DCDC records, from the DCDC participating states. These files are referred to as the NCANDS DCDC 1995-1997 Data Files (NCANDS 1995-1997).

The NCANDS 1995-1997 consists of 76 data elements. The NCANDS 1995-1997 is composed of 54 data files – two from each participating state in each year. One of the two files per state contains fourteen variables and includes information about all reports of alleged maltreatment and all the children involved in these reports. This extract is referred to as the J File. The second file for each state contains 62 variables and includes information about all reports of substantiated or indicated maltreatment, and all child victims in these reports. This extract on child victims is referred to as the K File.

Inclusion Dates and States

The 1995 NCANDS files consist of data from 10 of the 1995 NCANDS DCDC participating states. These included the states of Colorado, Delaware, Florida, Kentucky, Massachusetts, Missouri, North Carolina, Texas, Utah, and Vermont. In 1996, eight states provided DCDC data. These states were Colorado, Delaware, Florida, Massachusetts, North Carolina, Oklahoma, Utah, and Vermont. Nine states provided DCDC data in 1997. The participating states were Colorado, Florida, Kentucky, Massachusetts, Oklahoma, Rhode Island, Utah, Vermont, and Wyoming. The 1995 NCANDS records have disposition dates that are from January 1 through December 31, 1995. The 1996 files have disposition dates that are from January 1 through December 31, 1996 and the 1997 files have disposition dates that are from January 1 through December 31, 1997.

J and K Files

The Archive distributes the NCANDS 1995-1997 as SAS transport or SPSS portable files. Other file formats, including data file subsets can be prepared by special request. Please refer to the NDACAN order form or contact the Archive for more information.

J File: There is one J File for each of the NCANDS 1995-1997 states. Each J File includes 14 variables and contains information about reports of alleged maltreatment and all the children included in these reports. All child fatalities have been excluded from the J Files. In each of the J Files, the unit of observation consists of a report/child pair. Therefore, there may be more than one report per child in the file. See Appendix F for an explanation.

K File: There is one K File for each of the NCANDS 1995-1997 states. Each K File includes 62 variables and includes reports of substantiated or indicated maltreatment, and all child victims in these reports. All child fatalities have been excluded from the K Files. In each of the K Files, the unit of observation consists of a report/child pair.

File names, numbers of records, and numbers of variables in each of the J and K Files are listed below in Table 2.1a, Table 2.1b and Table 2.1c. For information regarding the coding of variables, see Appendices C and D. For information regarding the computational rules defining the derived variables, see Appendix E. In addition, frequencies and summary statistics, are available on the NDACAN web server.

Table 2.1a Details of the 1995 NCANDS DCDC.

State	File J Name	Record Count	Variable Count		File K Name	Record Count	Variable Count
Colorado	CO95J	6,073	14		CO95K	6,073	62
Delaware	DE95J	5,055	14		DE95K	1,833	62
Florida	FL95J	163,297	14		FL95K	73,368	62
Kentucky	KY95J	46,566	14		KY95K	12,655	62
Massachusetts	MA95J	54,497	14		MA95K	27,582	62
Missouri	MO95J	78,996	14		MO95K	17,124	62
North Carolina	NC95J	89,258	14		NC95K	62,756	62
Texas	TX95J	157,636	14		TX95K	46,493	62
Utah	UT95J	26,610	14		UT95K	9,117	62
Vermont	VT95j	2,606	14		VT95K	1,205	62

Table 2.1b. Details of the 1996 NCANDS DCDC.

State	File J Name	Record Count	Variable Count		File K Name	Record Count	Variable Count
Colorado	CO96J	6,468	14		CO96K	6,464	62
Delaware	DE96J	7,353	14		DE96K	2,498	62
Florida	FL96J	164,640	14		FL96K	73,679	62
Massachusetts	MA96J	57,346	14		MA96K	29,558	62
North Carolina	NC96J	71,530	14		NC96K	22,299	62
Oklahoma	OK96J	48,607	14		OK96K	13,680	62
Utah	UT96J	24,684	14		UT96K	8,598	62
Vermont	VT96J	2,647	14		VT96K	1,186	62

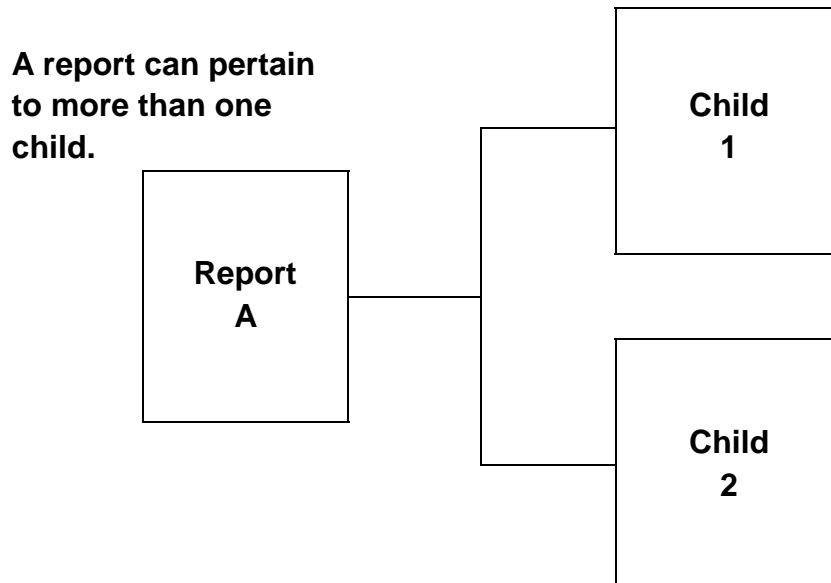
Table 2.1c. Details of the 1997 NCANDS DCDC.

State	File J Name	Record Count	Variable Count	File K Name	Record Count	Variable Count
Colorado	CO97J	7,179	14	CO97K	6,954	62
Florida	FL97J	168,256	14	FL97K	77,479	62
Kentucky	KY97J	44,984	14	KY97K	20,269	62
Massachusetts	MA97J	61,790	14	MA97K	32,390	62
Oklahoma	OK97J	50,976	14	OK97K	15,585	62
Rhode Island	RI97J	13,208	14	RI97K	3,856	62
Utah	UT97J	27,129	14	UT97K	9,317	62
Vermont	VT97J	2,671	14	VT97K	1,181	62
Wyoming	WY97J	726	14	WY97K	707	62

Report and Child Identification Codes

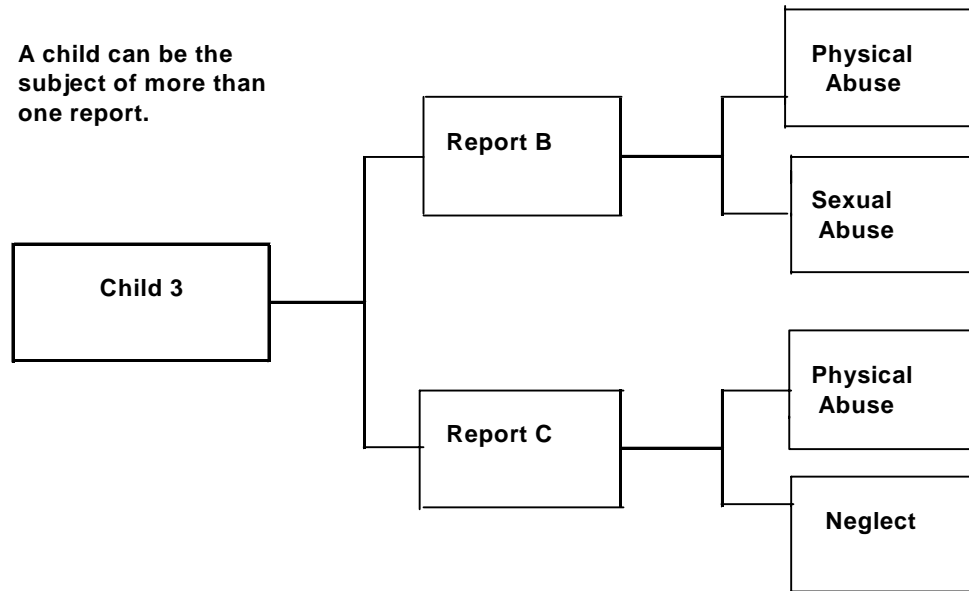
States submitting case level data provide a unique report identification code (YSRPTID) for each report of maltreatment recorded. In most states, if more than one child is included in a report, each child is entered as a separate record but all children share the same report ID. This relationship is illustrated in Figure 2.1. In such states, a count of children in a given report can be obtained by counting the number of children sharing the respective report ID. In other states reports are counted at the child level and therefore while reports have unique ID's, only one child is attached to each report ID.

Figure 2.1 Relationships Between Reports and Children in NCANDS



In most states children receive unique ID's (YSCHID). If a child is included in more than one report, each report will be associated with the same child ID. This relationship is illustrated in Figure 2.2. In general, the recurrence of maltreatment for a given child can be determined by counting the number of records sharing the same child ID.

Figure 2.2 Relationships Between Children and Reports in the NCANDS



There are, however, a few caveats to consider when using the child ID to match different reports within a given file. State laws and data processing capabilities sometimes limit the ability to match children to previous reports. This limitation is most commonly observed in unsubstantiated reports where state law may prohibit the archiving of data that identifies these children or families. As a result, the use of the child ID to identify children in multiple reports should be limited to reports where the maltreatment was substantiated or indicated (NCANDS 1995-1997 File K). The inability to identify the same child in multiple reports might also occur in states with county based data collection systems if records between counties cannot be referenced.

In sum, neither the variable report ID (YSRPTID), nor the variable child ID (YSCHID) uniquely identifies a report or child. Records in the dataset are uniquely identified by the combination of the variables YSRPTID and YSCHID.

For further explanation of the DCDC relationship between children and reports, see Appendix F.

Aggregating the Data Files by Report or Child

Although each of the data files provided may include multiple entries for a given report or child, a variety of programming techniques can be utilized to aggregate these data into a file which contains only one entry per report or one entry per child. For example, it is possible to create a file of unique reports which also contains characteristics of all of the respective entries. Such characteristics might include the total number of children referenced in the report or the age of the youngest and oldest children. Similarly, a file of unique children can be created which contains a count of the number of reports in which the child was included or the type(s) of maltreatment associated with the respective reports. An instructional example of how one might set up the NCANDS 1995-1997 Data Files is presented in Appendix G.

Conducting Analyses with the NCANDS DCDC

The NCANDS 1995-1997 may be analyzed at either the child or report level.

- It is important to note that State to State variations in child abuse and neglect data elements and definitions will affect the interpretation of the data.
- The data from the NCANDS 1995-1997 DCDC states are not a statistically representative sample of the United States. However, the combined data reveal distributions that are similar to those found in other studies¹.

State Classification of the Disposition of Investigations

The disposition of each investigation depends on the classification system used by each participating NCANDS state. Some states use a two-tier system that shows the allegation as “substantiated” or “unsubstantiated.” Other states use a three-tier system that includes a third category called “indicated.” In these states, the “indicated” classification is used when there is sufficient reason to suspect that the child may have been maltreated or is at risk of maltreatment, but the allegation could not be substantiated to the level of evidence required by state law. Since states use different terms and different levels of evidence, in some cases the data have been converted, with the approval of the given state, to fit the DCDC categories of “substantiated” or “indicated” as closely as possible for analytical purposes. A glossary of terms used in the NCANDS can be found in Appendix H.

Report Substantiation

A report may consist of multiple children, each with a mixture of substantiated and/or unsubstantiated maltreatments. If at least one maltreatment for one child is substantiated or indicated, then the disposition of the report is coded as substantiated or indicated.

¹ U.S. Department of Health and Human Services, National Center on Child Abuse and Neglect. *Child Abuse and Neglect Case-Level Data 1993: Working Paper 1* (Washington, DC: U.S. Government Printing Office, 1996).

The J files contain records of all children included in all investigated reports. The K files contain records on only victim children. These children are defined as children who had at least one substantiated or indicated maltreatment.

Report and Child Identifiers

Report and Child IDs were generated by each state before the data were submitted to NCANDS. Report and Child IDs were encrypted in order to protect the confidentiality of the individuals included in the files.

Missing Data

Records pertaining to children who were fatality victims due to child maltreatment have been removed from the Data File in order to preserve the confidentiality of these records.

Please contact the Archive directly if you have questions or encounter problems in using the NCANDS Data Files.

BIBLIOGRAPHY

The references for this document are divided into two sections: The first section provides the citations for documents produced from the NCANDS. The second section provides the citations for documents that relate to the NCANDS. Please note that this bibliography is not meant to provide an exhaustive or representative list of documents published from, and related to the dataset. It is meant to provide the researcher with a starting point to begin a background literature search.

Documents Produced From the NCANDS

- Fluke, J. D., Yuan, Y. T., & Edward, M. (1999). Recurrence of maltreatment: An application of the National Child Abuse and Neglect Data System (NCANDS). *Child Abuse and Neglect*, (23) 7, 663-650.
- U.S. Department of Health and Human Services, National Center on Child Abuse and Neglect. *Child Abuse and Neglect Case-Level Data 1993: Working Paper 1*. (Washington, DC: U.S. Government Printing Office, 1996).
- U.S. Department of Health and Human Services, National Center on Child Abuse and Neglect. *Child Maltreatment 1992: Reports from the States to the National Center on Child Abuse and Neglect*. (Washington, DC: U.S. Government Printing Office, 1994).
- U.S. Department of Health and Human Services, National Center on Child Abuse and Neglect. *Child Maltreatment 1993: Reports From the States to the National Center on Child Abuse and Neglect*. (Washington, DC: U.S. Government Printing Office, 1995).
- U.S. Department of Health and Human Services, National Center on Child Abuse and Neglect. *Child Maltreatment 1994: Reports from the States to the National Center on Child Abuse and Neglect*. (Washington, DC: U.S. Government Printing Office, 1996).
- U.S. Department of Health and Human Services, National Center on Child Abuse and Neglect. *Child Maltreatment 1995: Reports From the States to the National Child Abuse and Neglect Data System*. (Washington, DC: U.S. Government Printing Office, 1997).
- U.S. Department of Health and Human Services, Children's Bureau. *Child Maltreatment 1996: Reports From the States to the National Center on Child Abuse and Neglect*. (Washington, DC: U.S. Government Printing Office, 1998).
- U.S. Department of Health and Human Services, Children's Bureau. *Child Maltreatment 1997: Reports From the States to the National Center on Child Abuse and Neglect*. (Washington, DC: U.S. Government Printing Office, 1998).

U.S. Department of Health and Human Services, National Center on Child Abuse and Neglect. *National Child Abuse and Neglect Data System: Working Paper 1: 1990 Summary Data Component*. (Washington, DC:1992).

U.S. Department of Health and Human Services, National Center on Child Abuse and Neglect. *National Child Abuse and Neglect Data System: Working Paper 2: 1991 Summary Data Component*. (Washington, DC: U.S. Government Printing Office, 1993).

Publications Related to the NCANDS

Barry F. & Collins P. T. (1997). The scope and history of child abuse and neglect. In J. Garbarino & J. Eckenrode (Eds.), *Understanding Abusive Families*. (2nd ed.) San Francisco, CA: Jossey Bass.

Sedlak, A.J. & Broadhurst, D. D. (1996). *The Third National Incidence Study of Child Abuse and Neglect (NIS-3) Final Report*. Washington, DC: U.S. Department of Health and Human Services, National Center on Child Abuse and Neglect.

APPENDIX A

NCANDS DCDC Data Elements

This appendix contains a list of the data elements that are included in the NCANDS DCDC. It is important to note that this is not the list of variables from the NCANDS 1995-1997 DCDC Data Files. The ensuing variable list is included for reference purposes only.

**NATIONAL CHILD ABUSE AND NEGLECT DATA SYSTEM (NCANDS)
TECHNICAL ASSISTANCE AND MANAGEMENT SUPPORT PROGRAM
DETAILED CASE DATA COMPONENT
DATA ELEMENTS**

REPORT DATA

1. Submission Year (SUBYR)
2. State/Territory (STATERR)
3. Report ID (RPTID)
4. Child ID (CHID)
5. County of Report (RPTCNTY)
6. Report Date (RPTDTE)
7. Report Source (RPTSRC)
8. Report Disposition (RPTDISP)
9. Report Disposition Date (RPTDISDT)
10. Notifications (NOTIFS)

CHILD DATA

11. Child Age at Report (CHAGE)
12. Child Date of Birth (CHBDATE)
13. Child Sex (CHSEX)
14. Child Race (CHRACE)
15. Child Hispanic Ethnicity (CHISP)
16. County of Residence (CHCNTY)
17. Living Arrangement (CHLVNG)
18. Military Family Member (CHMIL)
19. Prior Victim (CHPRIOR)

CHILD VICTIM DATA

20. Maltreatment-1 Type (CHMAL1)
21. Maltreatment-1DispositionLevel (MAL1LEV)
22. Maltreatment-2 Type (CHMAL2)
23. Maltreatment-2DispositionLevel (MAL2LEV)
24. Maltreatment-3 Type (CHMAL3)
25. Maltreatment-3DispositionLevel (MAL3LEV)
26. Maltreatment-4 Type (CHMAL4)
27. Maltreatment-4DispositionLevel (MAL4LEV)
28. Maltreatment Death (MALDEATH)
29. Alcohol Abuse-Child (CDALC)
30. Drug Abuse-Child (CDDRUG)
31. Mental Retardation-Child (CDRTRD)
32. Emotionally Disturbed-Child (CEMOTNL)
33. Visually or Hearing Impaired-Child (CDVISUAL)
34. Learning Disability-Child (CDLEARN)
35. Physically Disabled-Child (CDPHYS)
36. Behavior Problem-Child (CDBEHAV)
37. Other Medical Condition-Child (CDMEDICL)
38. Alcohol Abuse-Caretaker(s) (FCALC)
39. Drug Abuse-Caretaker(s) (FCDRUG)
40. Mental Retardation-Caretaker(s) (FCRTRD)

CHILD VICTIM DATA (Continued)

41. Emotionally Disturbed-Caretaker(s) (FCEMOTNL)
42. Visually or Hearing Impaired-Caretaker(s) (FCVISUAL)
43. Learning Disability-Caretaker(s) (FCLEARN)
44. Physically Disabled-Caretaker(s) (FCPHYS)
45. Other Medical Condition-Caretaker(s) (FCMEDICL)
46. Domestic Violence (FCVIOL)
47. Inadequate Housing (FCHOUSE)
48. Financial Problem (FCMONEY)
49. Public Assistance (FCPUBLIC)
50. Post Investigation Services (POSTSERV)
51. Service Date (SERVDATE)
52. Family Support Services (FAMSUP)
53. Family Preservation Services (FAMPRES)
54. Foster Care Services (FOSTERCR)
55. Removal Date (RMVDATE)
56. Juvenile Court Petition (JUVPET)
57. Petition Date (PETDATE)
58. Adoption Services (ADOPT)
59. Case Management Services (CASEMANG)
60. Counseling Services (COUNSEL)
61. Day Care Services-Child (DAYCARE)
62. Educational and Training Services (EDUCATN)
63. Employment Services (EMPLOY)
64. Family Planning Services (FAMPLAN)
65. Health-Related and Home Health Services (HEALTH)
66. Home-Based Services (HOMEBASE)
67. Housing Services (HOUSING)
68. Independent and Transitional Living Services (TRANSLIV)
69. Information and Referral Services (INFOREF)
70. Legal Services (LEGAL)
71. Mental Health Services (MENTHLTH)
72. Pregnancy and Parenting Services for Young Parents (PREGPAR)
73. Respite Care Services (RESPITE)
74. Special Services-Disabled (SSDISABL)
75. Special Services-Juvenile Delinquent (SSDELINQ)
76. Substance Abuse Services (SUBABUSE)
77. Transportation Services (TRANSPRT)
78. Other Services (OTHERSV)

**NATIONAL CHILD ABUSE AND NEGLECT DATA SYSTEM (NCANDS)
TECHNICAL ASSISTANCE AND MANAGEMENT SUPPORT PROGRAM
DETAILED CASE DATA COMPONENT
DATA ELEMENTS**

PERPETRATOR DATA

- 79. Perpetrator-1 ID (PER1ID)
- 80. Perpetrator-1 Relationship (PER1REL)
- 81. Perpetrator-1 as a Caretaker (PER1CR)
- 82. Perpetrator-1 Age at Report (PER1AGE)
- 83. Perpetrator-1 Sex (PER1SEX)
- 84. Perpetrator-1 Race (PER1RACE)
- 85. Perpetrator-1 Hispanic Ethnicity (PER1HISP)
- 86. Perpetrator-1 Military Member (PER1MIL)
- 87. Perpetrator-1 Prior Abuser (PER1PIOR)
- 88. Perpetrator-1 Maltreatment-1 (PER1MAL1)
- 89. Perpetrator-1 Maltreatment-2 (PER1MAL2)
- 90. Perpetrator-1 Maltreatment-3 (PER1MAL3)
- 91. Perpetrator-1 Maltreatment-4 (PER1MAL4)
- 92. Perpetrator-2 ID (PER2ID)
- 93. Perpetrator-2 Relationship (PER2REL)
- 94. Perpetrator-2 as a Caretaker (PER2CR)
- 95. Perpetrator-2 Age at Report (PER2AGE)
- 96. Perpetrator-2 Sex (PER2SEX)
- 97. Perpetrator-2 Race (PER2RACE)
- 98. Perpetrator-2 Hispanic Ethnicity (PER2HISP)
- 99. Perpetrator-2 Military Member (PER2MIL)
- 100. Perpetrator-2 Prior Abuser (PER2PIOR)
- 101. Perpetrator-2 Maltreatment-1 (PER2MAL1)
- 102. Perpetrator-2 Maltreatment-2 (PER2MAL2)
- 103. Perpetrator-2 Maltreatment-3 (PER2MAL3)
- 104. Perpetrator-2 Maltreatment-4 (PER2MAL4)
- 105. Perpetrator-3 ID (PER3ID)
- 106. Perpetrator-3 Relationship (PER3REL)
- 107. Perpetrator-3 as a Caretaker (PER3CR)
- 108. Perpetrator-3 Age at Report (PER3AGE)
- 109. Perpetrator-3 Sex (PER3SEX)
- 110. Perpetrator-3 Race (PER3RACE)
- 111. Perpetrator-3 Hispanic Ethnicity (PER3HISP)
- 112. Perpetrator-3 Military Member (PER3MIL)
- 113. Perpetrator-3 Prior Abuser (PER3PIOR)
- 114. Perpetrator-3 Maltreatment-1 (PER3MAL1)
- 115. Perpetrator-3 Maltreatment-2 (PER3MAL2)
- 116. Perpetrator-3 Maltreatment-3 (PER3MAL3)
- 117. Perpetrator-3 Maltreatment-4 (PER3MAL4)

APPENDIX B

Sample Mapping Form for the NCANDS DCDC

This appendix contains an example the mapping forms for the NCANDS DCDC. It is important to note that these forms do not relate directly to the 1995-1997 NCANDS DCDC Data Files, since the NCANDS 1995-1997 consists of selected and derived variables from the original NCANDS DCDC.

EXAMPLE OF NCANDS DCDC MAPPING FORM PART 1

DATA ELEMENT NAME		CHARACTERISTICS			
Long:		Type:		Field #:	
Short:		Size:		Position:	
DEFINITION					
INSTRUCTIONS/ERROR CONDITIONS					
NCANDS DATA ELEMENT CODE VALUES					
STATE DATA CHARACTERISTICS					
[]					
STATE COMMENTARY/CONSTRUCTION LOGIC					
STATE FILE NAME		STATE FIELD NAME			

APPENDIX C

Coding Information for 'J' Files

This appendix contains coding information for the 14 variables in the 1995-1997 NCANDS DCDC 'J' Data Files. The J Files include data on reports and children who were the subject of an investigation. The variables are presented in the order in which they appear in the files. One of the variables is labeled as a computed variable. This variable was derived from the original NCANDS elements as described in Appendix E.

Coding Information for the 'J' Files

Please note that the information listed for each variable includes an SPSS format statement. If the format begins with the letter "F" then the variable is numeric. If the format begins with the letter "A" then the variable is an alpha-numeric. The numbers in the format refer to the number of digits and decimal places allowed in the variable. For example, the variable 'YSRPTID' has a format A16. This means that it is an alpha-numeric variable and that it allows for sixteen characters.

YSRPTID	Report ID	Format: A16
	Unique identification label assigned to each report of maltreatment.	
YSCHID	Child ID	Format: A16
	Unique identification label assigned to child.	
STATERR	State	Format: A2
	Two-letter state abbreviation.	
RPTDT	Report Date	Format: DATE9
	Date maltreatment was reported.	
RPDISPDT	Disposition Date	Format: DATE9
	Date a decision was reached concerning the disposition of alleged maltreatment(s).	
RPTDISP	Report Disposition	Format: F1
	Conclusion reached by responsible agency concerning report of alleged maltreatment.	
	Value	Label
	1	Substantiated
	2	Indicated
	3	Unsubstantiated
	4	Closed No Finding
	8	Other
	9	Unknown

RPTSRC Report Source Format: F2

Role of person who reported alleged maltreatment.

Value	Label
1	Social Services/Mental Health
2	Medical Personnel
3	Legal Personnel
4	Educational Personnel
5	Care Provider/Foster Parent
6	Alleged Victim
7	Parent
8	Other Relative
9	Friends Neighbor
10	Alleged Perpetrator
11	Anonymous Reporter
88	Other
99	Unknown

CHAGE Child's Age Format: F2

Child's age on date of report.

Value	Label
77	Unborn
99	Unknown

CHSEX Child's Sex Format: F1

Child's gender recorded at the time of the report.

Value	Label
1	Male
2	Female
9	Unknown

CHRACE Child's Race Format: F2

Primary racial group which the child or parent identifies the child as a member.

Value	Label
1	White
2	Black/African American
3	American Indian/Alaskan Native
4	Asian/Pacific Islander
88	Other
99	Unknown

CHISP	Child's Hispanic Ethnicity	Format: F1
	A Mexican, Puerto Rican, Cuban, Central or South American, or other Spanish ancestry regardless of race.	
	Value	Label
	1	Yes
	2	No
	9	Unknown
CHPRIOR	Prior Victimization Status	Format: F1
	Existence of previous substantiated or indicated incident of maltreatment.	
	Value	Label
	1	Yes
	2	No
	9	Unknown
NOTIFS	Notifications	Format: F1
	Mandated or courtesy contacting of other agencies concerning report of child maltreatment.	
	Value	Label
	1	None
	2	Police Prosecutor
	3	Licensing Agency
	4	Both
	8	Other
	9	Unknown
FLVICTIM	Substantiated or Indicated Maltreatment (computed)	Format: F1
	Flag of substantiated or indicated maltreatment of child in this report.	
	Value	Label
	0	No
	1	Yes

APPENDIX D

Coding Information for 'K' Files

This appendix contains coding information for the 62 variables in the Fiscal Year 1995-1997 NCANDS DCDC 'K' Data Files. The K Files include data for children who were specifically identified as a substantiated or indicated victim of abuse or neglect. Records associated with unsubstantiated reports are not included. The variables are presented in the order in which they appear in the files. Twenty one of the variables are labeled as computed variables. These were derived from the original NCANDS elements as described in Appendix E.

Coding Information for the 'K' Files

Please note that the information listed for each variable includes an SPSS format statement. If the format begins with the letter "F" then the variable is numeric. If the format begins with the letter "A" then the variable is an alpha-numeric. The numbers in the format refer to the number of digits and decimal places allowed in the variable. For example, the variable 'YSRPTID' has a format A16. This means that it is an alpha-numeric variable and that it allows for sixteen characters.

YSRPTID	Report ID	Format: A16
	Unique identification label assigned to each report of maltreatment.	
YSCHID	Child ID	Format: A16
	Unique identification label assigned to child.	
STATERR	State	Format: A2
	Two-letter state abbreviation.	
RPTDT	Report Date	Format: DATE9
	Date maltreatment was reported.	
RPDISPDT	Disposition Date	Format: DATE9
	Date a decision was reached concerning the disposition of alleged maltreatment(s).	
RPTDISP	Report Disposition	Format: F1
	Conclusion reached by responsible agency concerning report of alleged maltreatment.	
	Value	Label
	1	Substantiated
	2	Indicated
	3	Unsubstantiated
	4	Closed No Finding
	8	Other
	9	Unknown

RPTSRC Report Source Format: F2

Role of person who reported alleged maltreatment.

Value	Label
1	Social Services/Mental Health
2	Medical Personnel
3	Legal Personnel
4	Educational Personnel
5	Care Provider/Foster Parent
6	Alleged Victim
7	Parent
8	Other Relative
9	Friends Neighbor
10	Alleged Perpetrator
11	Anonymous Reporter
88	Other
99	Unknown

CHAGE Child's Age Format: F2

Child's age on date of report.

Value	Label
77	Unborn
99	Unknown

CHSEX Child's Sex Format: F1

Child's gender recorded at the time of the report.

Value	Label
1	Male
2	Female
9	Unknown

CHRACE Child's Race Format: F2

Primary racial group which the child or parent identifies the child as a member.

Value	Label
1	White
2	Black/African American
3	American Indian/Alaskan Native
4	Asian/Pacific Islander
88	Other
99	Unknown

CHISP	Child's Hispanic Ethnicity	Format: F1
	A Mexican, Puerto Rican, Cuban, Central or South American, or other Spanish ancestry regardless of race.	
	Value Label	
	1 Yes	
	2 No	
	9 Unknown	
CHPRIOR	Prior Victimization Status	Format: F1
	Existence of previous substantiated or indicated incident of maltreatment.	
	Value Label	
	1 Yes	
	2 No	
	9 Unknown	
POSTSERV	Post Investigation Services Provided	Format: F1
	CPS or child welfare services provided as a result of needs identified during the investigation.	
	Value Label	
	1 Yes	
	2 No	
	9 Unknown	
SERVDATE	Date of Post Investigative Services	Format: DATE9
	Date post-investigation services were provided, generally the date of the report disposition.	
FAMSUP	Family Support Services Provided	Format: F1
	Family support services were opened or planned for the family.	
	Value Label	
	1 Yes	
	2 No	
	9 Unknown	

FAMPRES Family Preservation Services Provided Format: F1

Family preservation services were opened or planned for the family.

Value	Label
1	Yes
2	No
9	Unknown

FOSTERCR Foster Care Services Provided Format: F1

Service or activities associated with 24 hour substitute care for all children placed away from their parents.

Value	Label
1	Yes
2	No
9	Unknown

RMVDATE Removal Date Format: DATE9

The month, day, and year the child was removed from the care and supervision of his or her parents.

JUVPET Juvenile Court Petition Format: F1

Legal document filed with the court requesting that the court take action regarding the child's status as a result of the investigation.

Value	Label
1	Yes
2	No
9	Unknown

PETDATE Court Petition Date Format: DATE9

The month, day, and year that the juvenile court petition was filed.

C_MAL_CN Maltreatment Count (computed) Format: F1

Number of substantiated or indicated maltreatments.

FL_CVPHY	Child Victim of Physical Abuse (computed)	Format: F1
	Flag indicating whether child was substantiated or indicated victim of physical abuse.	
	Value	Label
	0	No
	1	Yes
C_PHYDIS	Physical Abuse Disposition (computed)	Format: F1
	Disposition of maltreatment associated with report of alleged physical abuse.	
	Value	Label
	1	Substantiated
	2	Indicated
	3	Unsubstantiated
	4	Closed No Finding
	8	Other
	9	Unknown
FL_CVNEG	Child Victim of Neglect (computed)	Format: F1
	Flag indicating whether child was substantiated or indicated victim of neglect.	
	Value	Label
	0	No
	1	Yes
C_NEGDIS	Neglect Disposition (computed)	Format: F1
	Disposition of maltreatment associated with report of alleged neglect.	
	Value	Label
	1	Substantiated
	2	Indicated
	3	Unsubstantiated
	4	Closed No Finding
	8	Other
	9	Unknown
FL_CVMED	Child Victim of Medical Neglect (computed)	Format: F1
	Flag indicating whether child was substantiated or indicated victim of medical neglect.	
	Value	Label
	0	No
	1	Yes

C_PSYDIS	Psychological Abuse Disposition (computed)	Format: F1														
	Disposition of maltreatment associated with report of alleged psychological abuse.															
	<table border="0"> <thead> <tr> <th style="text-align: left;">Value</th> <th style="text-align: left;">Label</th> </tr> </thead> <tbody> <tr><td>1</td><td>Substantiated</td></tr> <tr><td>2</td><td>Indicated</td></tr> <tr><td>3</td><td>Unsubstantiated</td></tr> <tr><td>4</td><td>Closed No Finding</td></tr> <tr><td>8</td><td>Other</td></tr> <tr><td>9</td><td>Unknown</td></tr> </tbody> </table>		Value	Label	1	Substantiated	2	Indicated	3	Unsubstantiated	4	Closed No Finding	8	Other	9	Unknown
Value	Label															
1	Substantiated															
2	Indicated															
3	Unsubstantiated															
4	Closed No Finding															
8	Other															
9	Unknown															
FL_CVOTH	Child Victim of Other Maltreatment (computed)	Format: F1														
	Flag indicating whether child was substantiated or indicated victim of some other type of maltreatment.															
	<table border="0"> <thead> <tr> <th style="text-align: left;">Value</th> <th style="text-align: left;">Label</th> </tr> </thead> <tbody> <tr><td>0</td><td>No</td></tr> <tr><td>1</td><td>Yes</td></tr> </tbody> </table>		Value	Label	0	No	1	Yes								
Value	Label															
0	No															
1	Yes															
C_OTHDIS	Other Maltreatment Disposition (computed)	Format: F1														
	Disposition of maltreatment associated with report of alleged other maltreatment.															
	<table border="0"> <thead> <tr> <th style="text-align: left;">Value</th> <th style="text-align: left;">Label</th> </tr> </thead> <tbody> <tr><td>1</td><td>Substantiated</td></tr> <tr><td>2</td><td>Indicated</td></tr> <tr><td>3</td><td>Unsubstantiated</td></tr> <tr><td>4</td><td>Closed No Finding</td></tr> <tr><td>8</td><td>Other</td></tr> <tr><td>9</td><td>Unknown</td></tr> </tbody> </table>		Value	Label	1	Substantiated	2	Indicated	3	Unsubstantiated	4	Closed No Finding	8	Other	9	Unknown
Value	Label															
1	Substantiated															
2	Indicated															
3	Unsubstantiated															
4	Closed No Finding															
8	Other															
9	Unknown															
FL_CVUNK	Child Victim of Unknown Maltreatment (computed)	Format: F1														
	Flag indicating whether child was substantiated or indicated victim of an unknown type of maltreatment															
	<table border="0"> <thead> <tr> <th style="text-align: left;">Value</th> <th style="text-align: left;">Label</th> </tr> </thead> <tbody> <tr><td>0</td><td>No</td></tr> <tr><td>1</td><td>Yes</td></tr> </tbody> </table>		Value	Label	0	No	1	Yes								
Value	Label															
0	No															
1	Yes															

CDDRUG Child Problem with Drugs Format: F1

The child was reported to compulsively use or need narcotics.

Value	Label
1	Yes
2	No
9	Unknown

CDRTRD Child Mentally Retarded Format: F1

The child was clinically diagnosed to be significantly subaverage in general cognitive ability.

Value	Label
1	Yes
2	No
9	Unknown

CDEMOTNL Child Emotionally Disturbed Format: F1

The child was clinically diagnosed to be emotionally disturbed.

Value	Label
1	Yes
2	No
9	Unknown

CDVISUAL Child Visual or Hearing Impaired Format: F1

The child was clinically diagnosed to be visually, hearing, or speech impaired.

Value	Label
1	Yes
2	No
9	Unknown

CDLEARN Child Learning Disability Format: F1

The child was reported to have a learning disability.

Value	Label
1	Yes
2	No
9	Unknown

CDPHYS Child Physically Disabled Format: F1

The child was reported to be physically disabled.

Value	Label
1	Yes
2	No
9	Unknown

CDBEHAV Child Behavior Problem Format: F1

The child was reported to have a behavior problem in school or in the community.

Value	Label
1	Yes
2	No
9	Unknown

CDMEDICL Child Other Medical Problem Format: F1

The child was reported to have another medical problem not previously identified.

Value	Label
1	Yes
2	No
9	Unknown

FCPROBFL Caretaker Problem Recorded (computed) Format: F1

Caretaker was reported to have a special problem such as drug abuse or a physical handicap.

Value	Label
1	Yes
2	No
9	Unknown

FCALCDRU Caretaker Problem, Drugs or Alcohol (computed) Format: F1

Caretaker was reported to have a problem with either drugs or alcohol.

Value	Label
1	Yes
2	No
9	Unknown

FCHOUSE Inadequate Housing Format: F1

Family reported to have inadequate housing.

Value	Label
1	Yes
2	No
9	Unknown

FCMONEY Family Has Financial Problem Format: F1

Family finances do not meet minimal needs.

Value	Label
1	Yes
2	No
9	Unknown

FCPUBLIC Family Receives Public Assistance Format: F1

Family receives public assistance from AFDC, general Assistance, Medicaid, SSI, Food Stamps, etc.

Value	Label
1	Yes
2	No
9	Unknown

APPENDIX E

Computational Rules for the NCANDS DCDC Variables

This appendix includes the computational rules (in the form of SPSS program statements) that were used to compute the derived variables in the NCANDS 1995-1997 Data Files.

Computational Rules for the NCANDS 1995-1997 Variables

FLVICTIM Flag Indicating Victimization Status (1=Yes,0=No)

* comment - flagged as victim if any maltreatment disposition is substantiated * or indicated.

```
compute flvictim = 0 .
if (
  (mal1lev eq 1 or mal1lev eq 2) or
  (mal2lev eq 1 or mal2lev eq 2) or
  (mal3lev eq 1 or mal3lev eq 2) or
  (mal4lev eq 1 or mal4lev eq 2) or
) flvictim = 1 .
```

C_MAL_CN Maltreatment Count

* For each alleged maltreatment, counter incremented if respective disposition

* is substantiated or indicated.

* If maltreatment resulted in child's death, counter is also incremented.

```
compute c_mal_cn = 0 .
if (mal1lev eq 1 or mal1lev eq 2) c_mal_cn = c_mal_cn + 1 .
if (mal2lev eq 1 or mal2lev eq 2) c_mal_cn = c_mal_cn + 1 .
if (mal3lev eq 1 or mal3lev eq 2) c_mal_cn = c_mal_cn + 1 .
if (mal4lev eq 1 or mal4lev eq 2) c_mal_cn = c_mal_cn + 1 .
```

FL_CVPHY Flag, Child Victim of Physical Abuse

* flag set to '1' if respective maltreatment is substantiated or indicated.

```
compute fl_cvphy = 0 .
if (chmal1 eq 1 and (mal1lev eq 1 or mal1lev eq 2)) fl_cvphy = 1 .
if (chmal2 eq 1 and (mal2lev eq 1 or mal2lev eq 2)) fl_cvphy = 1 .
if (chmal3 eq 1 and (mal3lev eq 1 or mal3lev eq 2)) fl_cvphy = 1 .
if (chmal4 eq 1 and (mal4lev eq 1 or mal4lev eq 2)) fl_cvphy = 1 .
```

C_PHYDIS Physical Abuse Maltreatment Disposition

* If no physical abuse is recorded, c_phydis will be defined as missing.

```
if (chmal1 eq 1) c_phydis = mal1lev.
if (chmal2 eq 1) c_phydis = mal2lev.
if (chmal3 eq 1) c_phydis = mal3lev.
if (chmal4 eq 1) c_phydis = mal4lev.
```

FL_CVNEG Flag, Child Victim of Neglect

* flag set to '1' if respective maltreatment is substantiated or indicated.

```
compute fl_cvneg = 0 .
if (chmal1 eq 2 and (mal1lev eq 1 or mal1lev eq 2)) fl_cvneg = 1 .
if (chmal2 eq 2 and (mal2lev eq 1 or mal2lev eq 2)) fl_cvneg = 1 .
if (chmal3 eq 2 and (mal3lev eq 1 or mal3lev eq 2)) fl_cvneg = 1 .
if (chmal4 eq 2 and (mal4lev eq 1 or mal4lev eq 2)) fl_cvneg = 1 .
```

C_NEGDIS Neglect Maltreatment Disposition

* If no neglect is recorded, c_negdis will be defined as missing.

```
if (chmal1 eq 2 ) c_negdis = mal1lev.  
if (chmal2 eq 2 ) c_negdis = mal2lev.  
if (chmal3 eq 2 ) c_negdis = mal3lev.  
if (chmal4 eq 2 ) c_negdis = mal4lev.
```

FL_CVMED Flag, Child Victim of Medical Neglect

* flag set to '1' if respective maltreatment is substantiated or indicated.

```
compute fl_cvmed = 0 .  
if (chmal1 eq 3 and (mal1lev eq 1 or mal1lev eq 2)) fl_cvmed = 1 .  
if (chmal2 eq 3 and (mal2lev eq 1 or mal2lev eq 2)) fl_cvmed = 1 .  
if (chmal3 eq 3 and (mal3lev eq 1 or mal3lev eq 2)) fl_cvmed = 1 .  
if (chmal4 eq 3 and (mal4lev eq 1 or mal4lev eq 2)) fl_cvmed = 1 .
```

C_MEDDIS Medical Neglect Maltreatment Disposition

* If no medical maltreatment is recorded c_meddis will be defined as missing.

```
if (chmal1 eq 3 ) c_meddis = mal1lev.  
if (chmal2 eq 3 ) c_meddis = mal2lev.  
if (chmal3 eq 3 ) c_meddis = mal3lev.  
if (chmal4 eq 3 ) c_meddis = mal4lev.
```

FL_CVSEX Flag, Child Victim of Sexual Abuse

* flag set to '1' if respective maltreatment is substantiated or indicated.

```
compute fl_cvsex = 0 .  
if (chmal1 eq 4 and (mal1lev eq 1 or mal1lev eq 2)) fl_cvsex = 1 .  
if (chmal2 eq 4 and (mal2lev eq 1 or mal2lev eq 2)) fl_cvsex = 1 .  
if (chmal3 eq 4 and (mal3lev eq 1 or mal3lev eq 2)) fl_cvsex = 1 .  
if (chmal4 eq 4 and (mal4lev eq 1 or mal4lev eq 2)) fl_cvsex = 1 .
```

C_SEXDIS Sexual Abuse Maltreatment Disposition

* If no alleged sexual abuse is recorded c_sexdis will be defined as missing.

```
if (chmal1 eq 4) c_sexdis = mal1lev.  
if (chmal2 eq 4) c_sexdis = mal2lev.  
if (chmal3 eq 4) c_sexdis = mal3lev.  
if (chmal4 eq 4) c_sexdis = mal4lev.
```

FL_CVPSY Flag, Child Victim of Psychological Abuse

* flag set to '1' if respective maltreatment is substantiated or indicated.

```
compute fl_cvpsy = 0 .  
if (chmal1 eq 5 and (mal1lev eq 1 or mal1lev eq 2)) fl_cvpsy = 1 .  
if (chmal2 eq 5 and (mal2lev eq 1 or mal2lev eq 2)) fl_cvpsy = 1 .  
if (chmal3 eq 5 and (mal3lev eq 1 or mal3lev eq 2)) fl_cvpsy = 1 .  
if (chmal4 eq 5 and (mal4lev eq 1 or mal4lev eq 2)) fl_cvpsy = 1 .
```

C_PSYDIS Psychological Abuse Maltreatment Disposition

* If no psychological abuse is recorded c_psydis will be defined as missing.

```
if (chmal1 eq 5 ) c_psydis= mal1lev.  
if (chmal2 eq 5 ) c_psydis= mal2lev.  
if (chmal3 eq 5 ) c_psydis= mal3lev.  
if (chmal4 eq 5 ) c_psydis= mal4lev.
```

FL_CVOOTH Flag, Child Victim of Other Maltreatment

* flag set to '1' if respective maltreatment is substantiated or indicated.

```
compute fl_cvooth = 0 .  
if (chmal1 eq 8 and (mal1lev eq 1 or mal1lev eq 2)) fl_cvooth = 1 .  
if (chmal2 eq 8 and (mal2lev eq 1 or mal2lev eq 2)) fl_cvooth = 1 .  
if (chmal3 eq 8 and (mal3lev eq 1 or mal3lev eq 2)) fl_cvooth = 1 .  
if (chmal4 eq 8 and (mal4lev eq 1 or mal4lev eq 2)) fl_cvooth = 1 .
```

C_OTHDIS Other Maltreatment Disposition

* If other maltreatment is not recorded c_othdis will be defined as missing.

```
if (chmal1 eq 8 ) c_othdis= mal1lev.  
if (chmal2 eq 8 ) c_othdis= mal2lev.  
if (chmal3 eq 8 ) c_othdis= mal3lev.  
if (chmal4 eq 8 ) c_othdis= mal4lev.
```

FL_CVUNK Flag, Child Victim of Unknown Maltreatment

* flag set to '1' if respective maltreatment is substantiated or indicated.

```
compute fl_cvunk = 0 .  
if (chmal1 eq 9 and (mal1lev eq 1 or mal1lev eq 2)) fl_cvunk = 1 .  
if (chmal2 eq 9 and (mal2lev eq 1 or mal2lev eq 2)) fl_cvunk = 1 .  
if (chmal3 eq 9 and (mal3lev eq 1 or mal3lev eq 2)) fl_cvunk = 1 .  
if (chmal4 eq 9 and (mal4lev eq 1 or mal4lev eq 2)) fl_cvunk = 1 .
```

C_UNKDIS Unknown Maltreatment Disposition

* If no unknown maltreatment is recorded c_unkdis will be defined as missing.

```
if (chmal1 eq 9 ) c_unkdis= mal1lev.  
if (chmal2 eq 9 ) c_unkdis= mal2lev.  
if (chmal3 eq 9 ) c_unkdis= mal3lev.  
if (chmal4 eq 9 ) c_unkdis= mal4lev.
```

CDPROBFL Child Problem Recorded

* Comment CDPROBFL: computed from fields CDALC - CDMEDICL.
 * Value set to 1=yes if any component is 1=yes.
 * Value set to 2=no only if all components are 2=no.
 * Value set to 9=unknown if any are unknown and none are yes.
 * Value set to 9=unknown if any are no, none are yes, and at least one component is 9=unknown or not specified.
 * This logic insures that the assigned value is an unspecified value (null or system missing) if no component values are provided.
 *
 * First assignment, below, later replaced if any yes or all no.
 if (
 (cdalc eq 9) or (cddrug eq 9) or (cdrtrd eq 9) or
 (cdemotnl eq 9) or (cdvisual eq 9) or (cdlearn eq 9) or
 (cdphys eq 9) or (cdbehav eq 9) or (cdmedicl eq 9)
) cdprobfl = 9 .
 * Second assignment, below, later replaced if any yes or all no.
 if (
 (cdalc eq 2) or (cddrug eq 2) or (cdrtrd eq 2) or
 (cdemotnl eq 2) or (cdvisual eq 2) or (cdlearn eq 2) or
 (cdphys eq 2) or (cdbehav eq 2) or (cdmedicl eq 2)
) cdprobfl = 9 .
 * Value set to 2=no if all components are no.
 if (
 (cdalc eq 2) and (cddrug eq 2) and (cdrtrd eq 2) and
 (cdemotnl eq 2) and (cdvisual eq 2) and (cdlearn eq 2) and
 (cdphys eq 2) and (cdbehav eq 2) and (cdmedicl eq 2)
) cdprobfl = 2 .
 * Value set to 1=yes if any component is yes.
 if (
 (cdalc eq 1) or (cddrug eq 1) or (cdrtrd eq 1) or
 (cdemotnl eq 1) or (cdvisual eq 1) or (cdlearn eq 1) or
 (cdphys eq 1) or (cdbehav eq 1) or (cdmedicl eq 1)
) cdprobfl = 1 .

CDALCDRU Child Problem with Alcohol or Drugs Recorded

* Comment CDALCDRU: computed from fields CDALC and CDDRUG.
 * Value set to 1=yes if either component is 1=yes.
 * Value set to 2=no only if both components are 2=no.
 * Value set to 9=unknown if either is unknown and neither yes.
 * Value set to 9=unknown if either is no while the other component is either 9=unknown or not specified.
 * This logic insures that the assigned value is an unspecified value (null or system missing) if neither component was provided.
 * Following assignments to 9=unknown replaced if any yes or all no.
 if ((cdalc eq 9) or (cddrug eq 9)) cdalcdru = 9 .
 if ((cdalc eq 2) or (cddrug eq 2)) cdalcdru = 9 .
 if ((cdalc eq 2) and (cddrug eq 2)) cdalcdru = 2 .
 if ((cdalc eq 1) or (cddrug eq 1)) cdalcdru = 1 .

CDPHYSME Child Physical or Mental Problem Recorded

```
* Comment CDPHYSME: computed from fields CDRTRD - CDMEDICL.
* Value set to 1=yes if any component is 1=yes.
* Value set to 2=no only if all components are 2=no.
* Value set to 9=unknown if any are unknown and none are yes.
* Value set to 9=unknown if any are no, none are yes, and at
*   least one component is 9=unknown or not specified.
* This logic insures that the assigned value is an unspecified value
* (null or system missing) if no component values are provided.
*
* First assignment, below, later replaced if any yes or all no.
if (
  (cdrtrd   eq 9) or
  (cdemotnl eq 9) or (cdvisual eq 9) or (cdlearn  eq 9) or
  (cdphys   eq 9) or (cdbehav  eq 9) or (cdmedicl eq 9)
)
  cdphysme = 9 .
* Second assignment, below, later replaced if any yes or all no.
if (
  (cdrtrd   eq 2) or
  (cdemotnl eq 2) or (cdvisual eq 2) or (cdlearn  eq 2) or
  (cdphys   eq 2) or (cdbehav  eq 2) or (cdmedicl eq 2)
)
  cdphysme = 9 .
* Value set to 2=no if all components are no.
if (
  (cdrtrd   eq 2) and
  (cdemotnl eq 2) and (cdvisual eq 2) and (cdlearn  eq 2) and
  (cdphys   eq 2) and (cdbehav  eq 2) and (cdmedicl eq 2)
)
  cdphysme = 2 .
* Value set to 1=yes if any component is yes.
if (
  (cdrtrd   eq 1) or
  (cdemotnl eq 1) or (cdvisual eq 1) or (cdlearn  eq 1) or
  (cdphys   eq 1) or (cdbehav  eq 1) or (cdmedicl eq 1)
)
  cdphysme = 1 .
```

FCPROBFL Caretaker Problem Recorded

```
* Comment FCPROBFL: computed from fields FCALC - FCPUBLIC.
* Value set to 1=yes if any component is 1=yes.
* Value set to 2=no only if all components are 2=no.
* Value set to 9=unknown if any are unknown and none are yes.
* Value set to 9=unknown if any are no, none are yes, and at
*   least one component is 9=unknown or not specified.
* This logic insures that the assigned value is an unspecified value
* (null or system missing) if no component values are provided.
*
* First assignment, below, later replaced if any yes or all no.
if (
  (fcalc      eq 9) or (fcdrug   eq 9) or (fctrtd   eq 9) or
  (fcemotnl  eq 9) or (fcvisual eq 9) or (fclearn  eq 9) or
  (fcphys    eq 9) or (fcmedicl eq 9) or
  (fcviol    eq 9) or (fchouse  eq 9) or
  (fcmoney   eq 9) or (fcpublic eq 9)
)
  fcprobfl = 9 .
* Second assignment, below, later replaced if any yes or all no.
if (
  (fcalc      eq 2) or (fcdrug   eq 2) or (fctrtd   eq 2) or
  (fcemotnl  eq 2) or (fcvisual eq 2) or (fclearn  eq 2) or
  (fcphys    eq 2) or (fcmedicl eq 2) or
  (fcviol    eq 2) or (fchouse  eq 2) or
  (fcmoney   eq 2) or (fcpublic eq 2)
)
  fcprobfl = 9 .
* Value set to 2=no if all components are no.
if (
  (fcalc      eq 2) and (fcdrug   eq 2) and (fctrtd   eq 2) and
  (fcemotnl  eq 2) and (fcvisual eq 2) and (fclearn  eq 2) and
  (fcphys    eq 2) and (fcmedicl eq 2) and
  (fcviol    eq 2) and (fchouse  eq 2) and
  (fcmoney   eq 2) and (fcpublic eq 2)
)
  fcprobfl = 2 .
* Value set to 1=yes if any component is yes.
if (
  (fcalc      eq 1) or (fcdrug   eq 1) or (fctrtd   eq 1) or
  (fcemotnl  eq 1) or (fcvisual eq 1) or (fclearn  eq 1) or
  (fcphys    eq 1) or (fcmedicl eq 1) or
  (fcviol    eq 1) or (fchouse  eq 1) or
  (fcmoney   eq 1) or (fcpublic eq 1)
)
  fcprobfl = 1 .
```

FCALCDRU Caretaker Alcohol or Drug Problem Recorded

* Comment FCALCDRU: computed from fields FCALC and FCDRUG.
 * Value set to 1=yes if either component is 1=yes.
 * Value set to 2=no only if both components are 2=no.
 * Value set to 9=unknown if either is unknown and neither yes.
 * Value set to 9=unknown if either is no while the
 * other component is either 9=unknown or not specified.
 * This logic insures that the assigned value is an unspecified value
 * (null or system missing) if neither component was provided.
 * Following assignments to 9=unknown replaced if any yes or all no.
 if ((fcalc eq 9) or (fcdrug eq 9)) fcalcdru = 9 .
 if ((fcalc eq 2) or (fcdrug eq 2)) fcalcdru = 9 .
 if ((fcalc eq 2) and (fcdrug eq 2)) fcalcdru = 2 .
 if ((fcalc eq 1) or (fcdrug eq 1)) fcalcdru = 1 .

FCPHYSME Caretaker Physical or Mental Problem Recorded

* Comment FCPHYSME: computed from fields FCRTRD - FCMEDICL.
 * Value set to 1=yes if any component is 1=yes.
 * Value set to 2=no only if all components are 2=no.
 * Value set to 9=unknown if any are unknown and none are yes.
 * Value set to 9=unknown if any are no, none are yes, and at
 * least one component is 9=unknown or not specified.
 * This logic insures that the assigned value is an unspecified value
 * (null or system missing) if no component values are provided.
 *
 * First assignment, below, later replaced if any yes or all no.
 if (
 (fcrtrd eq 9) or
 (fcemotnl eq 9) or (fcvisual eq 9) or (fclearn eq 9) or
 (fcphys eq 9) or (fcmcdicl eq 9)
)
 fcphysme = 9 .
 * Second assignment, below, later replaced if any yes or all no.
 if (
 (fcrtrd eq 2) or
 (fcemotnl eq 2) or (fcvisual eq 2) or (fclearn eq 2) or
 (fcphys eq 2) or (fcmcdicl eq 2)
)
 fcphysme = 9 .
 * Value set to 2=no if all components are no.
 if (
 (fcrtrd eq 2) and
 (fcemotnl eq 2) and (fcvisual eq 2) and (fclearn eq 2) and
 (fcphys eq 2) and (fcmcdicl eq 2)
)
 fcphysme = 2 .
 * Value set to 1=yes if any component is yes.
 if (
 (fcrtrd eq 1) or
 (fcemotnl eq 1) or (fcvisual eq 1) or (fclearn eq 1) or
 (fcphys eq 1) or (fcmcdicl eq 1)
)
 fcphysme = 1 .

APPENDIX F

Introduction to the NCANDS DCDC

This appendix is included to provide additional background information about the NCANDS. It includes some definitions and explains concepts that are crucial to using and interpreting the 1995-1997 NCANDS Data Files. This appendix also explains the original DCDC record layout.

Why Use Case-Level Data?

- Without case level data, only one variable at a time may be examined
 - Allows for complex analyses which examine multivariate phenomena
 - Distributions within and between states may be examined
-

Some DCDC Definitions

- A DCDC Report...
 - is a notification of suspected child abuse
 - may be substantiated or unsubstantiated
 - may involve one or more children
 - may involve one or more alleged perpetrators
- A DCDC Data Record...
 - contains the data related to one child in a single report

So...A report involving three children will result in three data records being submitted.

What are Unique Identifiers?

A Unique Report ID never has and never will be used for another report. The ID will always be the only ID used to reference this given report.

A Unique Child ID never has and never will be used for another child. The ID will always be the only ID used to reference this child. If this child appears in a later report, this ID must be used again for this child, even in subsequent years.

DCDC Record Layout

DCDC RECORD		
State Submits Report and Child Data Fields for ALL Reports		State Submits Remaining Data Fields only for Substantiated and Indicated Reports
Report and Child Data (Fields 1-19)		Child Victim Data (Fields 20-78)
Report Characteristics (Fields 1-10)	Child Demographics (Fields 11-19)	Child Victim Data (Fields 20-78)

DCDC Record Layout

DCDC RECORD	
Report and Child Data (Fields 1-19)	
Child Victim Data (Fields 20-78)	
Report Characteristics (Fields 1-10)	Child Demographics (Fields 11-19)
	Child Victims (Fields 20-78)
	Maltreatment (Fields 20-28) Disability (Fields 29-37) Caretaker (Fields 38-49) Services (Fields 50-78)

Substantiated / Unsubstantiated

In a single record, each of the four Child Maltreatment data elements have a Maltreatment Level of Substantiated (S), Indicated (S) or Unsubstantiated (U).

However, the Report Disposition is determined by the values of the four Maltreatment Levels in ALL of the records in the Report:

- If ALL Maltreatment Levels in ALL of the records of a Report are Unsubstantiated (U), the Report Disposition is Unsubstantiated (U).
- If ANY Maltreatment Level is Substantiated (S) in ANY of the records of the report, the Report Disposition is Substantiated (S).

NOTE: DCDC treats "Indicated" as "Substantiated"

Child Maltreatment Samples

Maltreatment Types and Levels

Record #	Report ID	Child ID	Report Dispos	Mal 1	Mal Level	Mal 2	Mal Level 2	Mal 3	Mal Level 3	Mal 4	Mal Level 4
1	R10 (R10000000000)	C15 (C1500000000)	1= Substan "S"	2= Neglect	3= Unsub "U"	5= Psychol	2= Indicat "S"	1= Physical	1 = Substan "S"		

- Four sets of Maltreatment/ Maltreatment Level
 - No order to the Maltreatments
 - Any maltreatment type can fall in any of the four sets
 - No maltreatment can be duplicated in a single record
-

Child Maltreatment Samples

A Sample DCDC File of Ten Records (generalized)

Record #	Report ID	Child ID	Report Disp	CHILD MALTREATMENTS			
				Mal-1	Mal-2	Mal-3	Mal-4
1	R01	C01	U				
2	R02	C01	U				
3	R02	C02	U				
4	R02	C03	U				
5	R03	C04	S	S	U		
6	R04	C02	S	S			
7	R04	C05	S	S	U		
8	R04	C06	S	U	U		
9	R05	C05	S	S	U	S	
10	R05	C07	S	U	U	S	S

How Case Level Data Adds Up

QUESTION: How many reports appear in the DCDC file?

UNIT OF ANALYSIS: Unique Reports

PROCEDURE: Frequency Counts

Counts of Unique Report IDs

R-ID	Count	For C-ID
R01	1	C01
R02	1	C01, C02, C03
R03	1	C04
R04	1	C02,C05, C06
R05	1	C05,C07
TOTAL	5	

How Case Level Data Adds Up

QUESTION: How many children appear in more than one report?

UNIT OF ANALYSIS: Unique Children

PROCEDURE: Frequency Count

Counts of Child IDs

C-ID	Count	R-ID
C01	2	R01, R02
C02	2	R02,R04
C05	2	R05, R04

APPENDIX G

Using the NCANDS DCDC Data Files

This appendix provides an instructional example of how to set up the NCANDS 1995-1997 for analysis in SPSS: how to add files, how to create useful variables, check ID consistency across reporting years, aggregate cases to find a total number of reports, determine the number of reports in a given time period, and how to aggregate and match recurrent reports.

Syntax and comments will be presented, as will sample output to show expected results. In some instances examples will be given to illustrate the effects of the program on case-level data.

Using the NCANDS DCDC Data Files

Syntax 1.1

* These commands will merge the 1995, 1996, 1997 K files from states aa and bb.

```
add files
  file= 'd:\data\aa95k.sav'
/file= 'd:\data\aa96k.sav'
/file= 'd:\data\aa97k.sav'
/file= 'd:\data\bb95k.sav'
/file= 'd:\data\bb96k.sav'
/file= 'd:\data\bb97k.sav'.
```

*These compute statements extract the month and year from the report date and disposition date variables and create new variables rptmonth, dspmonth, rptyear, and dispyear. The crosstabs procedure will show the general distribution of file with respect to dates.

```
compute rptmonth = xdate.month(rptdt) .
compute dspmonth = xdate.month(rpdispdt) .
compute rptyear = xdate.year(rptdt) .
compute dispyear = xdate.year(rpdispdt) .
crosstabs tables = rptyear by dispyear by staterr .
```

Sample Output 1.1 (Complete Dataset)

Report Year * Disposition Year* Reporting State Crosstabulation

Reporting State		Disposition Year			Total
		1995.00	1996.00	1997.00	
AA	Report Year 1994.00	562			562
	1995.00	8555	450		9005
	1996.00		8148	692	8840
	1997.00			8625	8625
	Total	9117	8598	9317	27032
BB	Report Year 1994.00	1120			1120
	1995.00	2085	1144		2229
	1996.00		2042	1131	2173
	1997.00			2050	2050
	Total	2205	2186	1181	3572

Syntax 2.1

* Removes the first four characters of the YSCHID variable to create a new variable STCHID which allows for the identification of children across years.

```
string stchid (a12) .
compute stchid = substr(yschid,5,12) .
```


Example 4.1 (Selected Cases)

YRSPTID	STCHID	RPTDT	ROLLUP	RPTPOSIT
1995AA1000	AA100	12/5/94	0	1
1995AA1010	AA123	4/16/95	0	1
1995AA2002	AA789	10/2/95	0	1
1995AA3030	AA789	10/2/95	0	2
1995BB4000	BB456	4/1/95	0	1
1995BB5020	BB456	6/20/95	0	2
1995BB5053	BB456	8/12/95	0	3

Sample Output 4.1 (Complete Dataset)**Report Position**

	Frequency	Percent	Valid Percent	Cumulative Percent
Valid 1.00	25278	83.2	83.2	83.2
2.00	3908	12.9	12.9	96.1
3.00	876	2.9	2.9	99.0
4.00	241	.8	.8	99.7
5.00	60	.2	.2	99.9
6.00	15	.0	.0	100.0
7.00	1	.0	.0	100.0
Total	30379	100.0	100.0	

Syntax 5.1

*aggregate to find the total number of reports per child and create new variables: first report date, last report date; first disposition date; last disposition date.

```
aggregate outfile = 'c:\windows\desktop\example1.sav' /break = stchid
  /numrepts = n(stchid)
  /firstdat = first(rptdt)
  /lastdat = last(rptdt)
  /firstdsp = first(rpdispdt)
  /lastdsp = last(rpdispdt) .
match files file = * /table = 'c:\windows\desktop\example1.sav' /by =
stchid.
crosstabs tables = numrepts by rptposit .
```

Example 5.1 (Selected Cases)

YRSPTID	STCHID	RPTDT	ROLLUP	RPTPOSIT	NUMRPTS	FIRSTDAT	LASTDAT
1995AA1000	AA100	12/5/94	0	1	1	12/5/94	12/5/94
1995AA1010	AA123	4/16/95	0	1	1	4/16/95	6/25/95
1995AA2002	AA789	10/2/95	0	2	2	4/16/95	6/25/95
1995AA3030	AA789	10/2/95	0	1	2	10/2/95	10/2/95
1995BB4000	BB456	4/1/95	0	1	3	4/1/95	8/12/95
1995BB5020	BB456	6/20/95	0	2	3	4/1/95	8/12/95
1995BB5053	BB456	8/12/95	0	3	3	4/1/95	8/12/95

Sample Output 5.1 (Complete Dataset)

Number of Reports * Report Position Crosstabulation

	Report Position							
	1.00	2.00	3.00	4.00	5.00	6.00	7.00	Total
NUMREPTS 1	21370							21370
2	3032	3032						6064
3	635	635	635					1905
4	181	181	181	181				724
5	45	45	45	45	45			225
6	14	14	14	14	14	14		84
7	1	1	1	1	1	1	1	7
Total	25278	3908	876	241	60	15	1	30379

Syntax 6.1

*now check to make sure ID is consistently used across years .

```
compute lastyear = xdate.year(lastdsp) .
compute frstyear = xdate.year(firstdsp) .
crosstabs tables = lastyear by frstyear .
```

Sample Output 6.1 (Complete Dataset)

Last Year * First Year Crosstabulation

		FIRSTYEAR			Total
		1995.00	1996.00	1997.00	
LAST YEAR	1995.00	8470			8470
	1996.00	1895	7736	8	9639
	1997.00	1807	1726	8727	12260
Total		12172	9462	8735	30369

Syntax 6.2

crosstabs tables = lastyear by frstyear by staterr.

Sample Output 6.2 (Complete Dataset)

Last Year * First Year * Reporting State Crosstabulation

			FIRSTYEAR			Total
			1995.00	1996.00	1997.00	
AA	LASTYEAR	1995.00	7423	10		7433
		1996.00	1719	6735	8	8462
		1997.00	1730	1597	7669	10996
Total			10872	8342	7677	26891
BB	LASTYEAR	1995.00	1047			1047
		1996.00	176	1001		1177
		1997.00	77	129	1058	1264
Total			1300	1130	1058	3488

Syntax 6.3

```
compute lastyr = xdate.year(lastdat) .
compute frstyr = xdate.year(firstdat) .
crosstabs tables = lastyr by frstyr by staterr .
```

Sample Output 6.3 (Complete Dataset)

Last Year * First Year * Reporting State Crosstabulation

Reporting State			FRSTYR				Total
			1994.00	1995.00	1996.00	1997.00	
AA	LASTYR	1994.00	412				412
		1995.00	137	7268			7405
		1996.00	149	1652	6981		8782
		1997.00	91	1622	1516	7063	10292
Total			789	10542	8497	7063	26891
BB	LASTYR	1994.00	95				98
		1995.00	14	1067			1081
		1996.00	16	150	1004		1170
		1997.00	17	74	109	939	1139
Total			145	1291	1113	939	3488

Syntax 7.1

*select only if initial date is within initial report period. Here, only children with an initial report in 1995 are included. Note that in the resulting selected cases dataset, the first case with a report date in 1994 has been removed from the file.

```
compute inityear = xdate.year(firstdat) .
select if (inityear eq 1995) .
crosstabs tables = staterr by inityear .
```

Example 7.1 (Selected Cases)

YRSPTID	STCHID	RPTDT	ROLLUP	RPTPOSIT	NUMRPTS	FIRSTDAT	LASTDAT
1995AA1010	AA123	4/16/95	0	1	1	4/16/95	6/25/95
1995AA2002	AA789	10/2/95	0	1	2	4/16/95	6/25/95
1995AA3030	AA789	10/2/95	0	2	2	10/2/95	10/2/95
1995BB4000	BB456	4/1/95	0	1	3	4/1/95	8/12/95
1995BB5020	BB456	6/20/95	0	2	3	4/1/95	8/12/95
1995BB5053	BB456	8/12/95	0	3	3	4/1/95	8/12/95

Sample Output 7.1 (Complete Dataset)

Reporting State* Initial Report Year Crosstabulation

		INITYEAR	Total
		1995.00	
Reporting State	AA	10542	10542
	BB	1291	1291
Total		11833	11833

APPENDIX H

Glossary of NCANDS Terms

NCANDS Detailed Case Data Component Glossary

ADOPTION SERVICES: Services or activities provided to assist in bringing about the adoption of a child.

ADOPTIVE PARENT: A person with the legal relation of parent to a child not related by birth, with the same mutual rights and obligations that exist between children and their birth parents.

AGE: Age calculated in years at the time of the report of abuse or neglect.

ALCOHOL ABUSE-CARETAKER(S): The principal caretaker(s)' compulsive use of alcohol that is not of a temporary nature.

ALCOHOL ABUSE-CHILD: A compulsive use of or need for alcohol. This element should include infants addicted at birth, or who are victims of Fetal Alcohol Syndrome, or who may suffer other disabilities due to the use of alcohol during pregnancy.

ALLEGED PERPETRATOR REPORT SOURCE: An individual who reports an alleged incident of child abuse or neglect in which he/she caused or knowingly allowed the maltreatment of a child.

ALLEGED VICTIM: A child named in an allegation of child maltreatment prior to disposition.

ALLEGED VICTIM REPORT SOURCE: A child who alleges to have been a victim of child maltreatment and who makes a report of the allegation.

AMERICAN INDIAN/ALASKAN NATIVE: A person whose ancestry is North American, and who maintains Tribal affiliation or is so recognized in the community.

ANONYMOUS REPORT SOURCE: An individual who reports a suspected incident of child maltreatment without identifying himself/herself.

ASIAN/PACIFIC ISLANDER: A person whose origin is the Far East, Southeast Asia, the Indian sub-continent, or the Pacific Islands. This includes, for example, Cambodia, China, Guam, India, Japan, Korea, the Philippine Islands, Samoa, and Vietnam.

BEHAVIOR PROBLEM-CHILD: Behavior in the school and/or community that adversely affects socialization, learning, growth, and moral development. These may include adjudicated or non-adjudicated child behavior problems. This would include the child's running away from home or a placement.

BIOLOGICAL PARENT: The birth mother or father of the child rather than the adoptive or foster parent or the step-parent.

BLACK/AFRICAN-AMERICAN: A person whose ancestry is any of the Black racial groups of Africa.

CARETAKER: A person responsible for the care and supervision of the child who was reported.

CASE MANAGEMENT SERVICES: Services or activities for the arrangement, coordination, and monitoring of services to meet the needs of children and their families.

CHILD: A person less than 18 years of age or considered to be a minor under State law (and is 21 years or younger).

CHILD AGE AT REPORT: Age, calculated in years, as of the date of the report of alleged child maltreatment.

CHILD-BASED REPORT: A system of receiving and counting reports of child abuse and neglect that counts as a report each child who is alleged to be a victim of maltreatment. (See also INCIDENT/FAMILY-BASED REPORT.)

CHILD DATE OF BIRTH: The month, day and year of the child's birth. If the child is abandoned or the date of birth is otherwise unknown, enter an approximate date of birth.

CHILD DAY CARE PROVIDER: A person who works in a setting providing day care-child services and who has temporary caretaker responsibility for the child (e.g., a day care center staff member, family day care provider, or babysitter).

CHILD ID: A unique identification assigned to each child. This identification is not the State child identification but is an encrypted identification assigned by the State for the purposes of the NCANDS DCDC data collection.

CLOSED-NO FINDING: A type of investigation disposition that does not conclude with a specific finding because the investigation could not be completed for such reasons as: the family moved out of the jurisdiction; the family could not be located; or necessary diagnostic or other reports were not received within required time limits.

COUNSELING SERVICES: Services or activities that apply the therapeutic processes to personal, family, situational or occupational problems in order to bring about a positive resolution of the problem or improved individual or family functioning or circumstances.

COUNTY OF REPORT: The geopolitical substate jurisdiction from which the report of child maltreatment originated. The unique identification number assigned to the county under the Federal Information Processing Standards (FIPS) guidelines is preferred.

COUNTY OF RESIDENCE: The geopolitical substate jurisdiction in which the child subject of a report was residing at the time of the report. The unique identification number assigned to the county under the Federal Information Processing Standards (FIPS) guidelines is preferred.

DAY CARE SERVICES-CHILD: Services or activities provided in a setting that meets applicable standards of State and local law, in a center or in a home, for a portion of a 24-hour day.

DOMESTIC VIOLENCE: Incidents of inter-spousal physical or emotional abuse perpetrated by one of the spouses or parent figures upon the other spouse or parent figure in the child victim's home environment.

DRUG ABUSE-CARETAKER(S): The principal caretaker(s)' compulsive use of drugs that is not of a temporary nature.

DRUG ABUSE-CHILD: The compulsive use of or need for narcotics. This element should include infants addicted at birth.

DUPLICATED COUNT/NUMBER: The counting of a child or perpetrator each time that the child or perpetrator may be included in a particular category during the reporting period. This includes counting the child or perpetrator for subsequent appearances or reports.

EDUCATIONAL AND TRAINING SERVICES. Services provided to improve knowledge or daily living skills and to enhance cultural opportunities.

EDUCATIONAL PERSONNEL: An employee of a public or private educational institution or program including teachers, teacher assistants, administrators and others directly associated with the delivery of educational services.

EMOTIONALLY DISTURBED-CARETAKER(S): A condition exhibiting one or more of the following characteristics over a long period of time and to a marked degree: an inability to build or maintain satisfactory interpersonal relationships; inappropriate types of behavior or feelings under normal circumstances; a general pervasive mood of unhappiness or depression; or a tendency to develop physical symptoms or fears associated with personal problems. The term includes persons who are schizophrenic or autistic. The term does not include persons who are socially maladjusted, unless it is determined that they are also seriously emotionally disturbed. This condition must be clinically diagnosed. The diagnosis is based on the *Diagnostic and Statistical Manual of Mental Disorders (the most recent edition of DSM)*.

EMOTIONALLY DISTURBED-CHILD: A condition exhibiting one or more of the following characteristics over a long period of time and to a marked degree: an inability to build or maintain satisfactory interpersonal relationships; inappropriate types of behavior or feelings under normal circumstances; a general pervasive mood of unhappiness or depression; or a tendency to develop physical symptoms or fears associated with personal problems. The term includes persons who are schizophrenic or autistic. The term does not include persons who are socially maladjusted, unless it is determined that they are also seriously emotionally disturbed. This condition must be clinically diagnosed. The diagnosis is based on *the Diagnostic and Statistical Manual of Mental Disorders (the most recent edition of DSM)*.

EMPLOYMENT SERVICES: Services or activities provided to assist individuals in securing employment or acquiring of learning skills that promote opportunities for employment.

ENCRYPTED: The encoding of an identifier (e.g., Child ID, Perpetrator ID) so that it is not identifiable to persons outside of the State's authorized personnel.

FAMILY: A group of two or more persons related by birth, marriage, adoption, or emotional ties.

FAMILY CHARACTERISTICS: Family, caretaker or environmental conditions present in the child victim's home or living environment.

FAMILY PLANNING SERVICES: Educational, comprehensive medical or social services or activities which enable individuals, including minors, to determine freely the number and spacing of their children and to select the means by which this may be achieved.

FAMILY PRESERVATION SERVICES: Family preservation services typically are services designed to help families alleviate crises that might lead to out-of-home placement of children; maintain the safety of children in their own homes; support families preparing to reunify or adopt; and assist families in obtaining services and other supports necessary to address their multiple needs in a culturally sensitive manner. (If a child cannot be protected from harm without placement or the family does not have adequate strengths on which to build, family preservation services are not appropriate.)

FAMILY SUPPORT SERVICES: Family support services are primarily community-based preventative activities designed to alleviate stress and promote parental competencies and behaviors that will increase the ability of families to successfully nurture their children; enable families to use other resources and opportunities available in the community, and create supportive networks to enhance child-rearing abilities of parents and help compensate for the increased social isolation and vulnerability of families.

FINANCIAL PROBLEM: A risk factor related to the family's inability to provide sufficient financial resources to meet minimum needs.

FOSTER CARE SERVICES: Services or activities associated with 24 hour substitute care for all children placed away from their parents or guardians and for whom the State agency has placement and care responsibility.

FOSTER PARENT: An individual who is licensed to provide a home for orphaned, abused, neglected, delinquent or disabled children, usually with the approval of the government or a social service agency. This individual can be a relative or a non-relative.

FRIEND: A non-relative acquainted with the child, the parent, or caretaker including: landlords, clergy, or youth group workers (e.g., Scouts, Little League Coaches), etc.

HEALTH-RELATED AND HOME HEALTH SERVICES: Services to attain and maintain a favorable condition of health.

HISPANIC ETHNICITY: A Mexican, Puerto Rican, Cuban, Central or South American person, or person of other Spanish cultural origin, regardless of race. Whether or not a person is Hispanic is determined by how others define them or by how they define themselves. In the case of young children, parents determine the race of the child.

HOME-BASED SERVICES: In-home services or activities provided to individuals or families to assist with household or personal care activities that improve or maintain adequate family well-being. Includes homemaker services, chore services, home maintenance services and household management services.

HOUSING SERVICES: Services or activities designed to assist individuals or families in locating, obtaining or retaining suitable housing.

INADEQUATE HOUSING: A risk factor related to substandard, overcrowded, unsafe, or otherwise inadequate housing conditions, including homelessness.

INCIDENT OR FAMILY-BASED REPORT: A system of receiving and counting reports of child abuse and neglect that is based on the number of reported incidents, regardless of the number of children involved in the incidents. (See also CHILD-BASED REPORT.)

INDEPENDENT AND TRANSITIONAL LIVING SERVICES: Services and activities designed to help older youth in foster care or homeless youth make the transition to independent living.

INDICATED OR REASON TO SUSPECT: A type of investigation disposition that concludes that maltreatment could not be substantiated under State law or policy, but there was reason to suspect that the child may have been maltreated or was at-risk of maltreatment.

INFORMATION AND REFERRAL SERVICES: Services or activities designed to provide information about services provided by public and private service providers and a brief assessment of client needs (but not a diagnosis and evaluation) to facilitate appropriate referral to these community resources.

INVESTIGATION: The gathering and assessment of objective information to determine if the child has been or is at-risk of being maltreated.

INVESTIGATION DISPOSITION: The determination by the social service agency that the evidence is, or is not, sufficient under State law to conclude that maltreatment occurred or, where State law permits, that the child is at-risk of being maltreated-

JUVENILE COURT PETITION: A legal document filed with the court of original jurisdiction overseeing matters affecting children, requesting that the court take action regarding the child's status as a result of the investigation; usually a petition requesting the child be declared a dependent or delinquent child, or that the child be placed in an out-of-home setting.

LEARNING DISABILITY-CARETAKER(S): A disorder in one or more of the principal caretaker(s)'s basic psychological processes involved in understanding or using language, spoken or written, that may manifest itself in an imperfect ability to listen, think, speak, read, write, spell or to use mathematical calculations. The term includes conditions such as perceptual disability, brain injury, minimal brain dysfunction, dyslexia, and developmental aphasia.

LEARNING DISABILITY-CHILD: A disorder in one or more of the child's basic psychological processes involved in understanding or using language, spoken or written, that may manifest itself in an imperfect ability to listen, think, speak, read, write, spell or to use mathematical calculations. The term includes conditions such as perceptual disability, brain injury, minimal brain dysfunction, dyslexia, and developmental aphasia.

LEGAL, LAW ENFORCEMENT, OR CRIMINAL JUSTICE PERSONNEL- A person employed by a local, State, Tribal or Federal justice agency including law enforcement; courts; district attorney's office; probation or other community corrections agency, or correctional facilities, etc.; or attorneys or guardian ad-litem.

LEGAL SERVICES: Services or activities provided by a lawyer, or other person(s) under the supervision of a lawyer, to assist individuals in seeking or obtaining legal help in civil matters such as housing, divorce, child support, guardianship, paternity and legal separation.

LICENSING AGENCY: The agency responsible for evaluating the adequacy of services available in a facility; for providing official approval of a service facility or provider which signifies meeting of State standards or standards set by other regulatory authorities, etc. State licensing agencies may also have the authority to conduct an investigation of those facilities under their auspices.

LIVING ARRANGEMENT: The environment in which the child was residing at the time of the report. 'Other' living arrangement includes substitute care homes/facilities.

MALTREATMENT: An action or failure to act by a parent, caretaker, or other person as defined under State law, having caused or allowed to cause physical abuse, neglect, medical neglect, sexual abuse, or emotional abuse harm, or risk of harm to a child.

MALTREATMENT DEATH: The child died as a result of abuse or neglect, because either: (a) an injury resulting from the abuse or neglect was the cause of death; or (b) abuse and/or neglect were contributing factors to the cause of death.

MALTREATMENT DISPOSITION LEVEL The disposition of each alleged maltreatment. The disposition level may be substantiated, indicated or reason to suspect, unsubstantiated, closed-no finding, other, or unknown.

MALTREATMENT TYPE: A particular form of child maltreatment that is determined by investigation to be substantiated or indicated under State law such as physical abuse, neglect or deprivation of necessities, sexual abuse, psychological or emotional maltreatment, and other forms included in State law.

MEDICAL NEGLECT: The harm by a caretaker to a child's health due to failure to provide for appropriate health care of the child, although financially able to do so, or offered financial or other means to do so.

MEDICAL PERSONNEL: A person employed by a medical facility or practice, including physicians, physician assistants, nurses, emergency medical technicians, dentists, dental assistants and technicians, chiropractors and coroners.

MENTAL HEALTH PERSONNEL- A person employed by a mental health facility or practice, including psychologists, psychiatrists, therapists, etc.

MENTAL HEALTH SERVICES: Services to overcome issues involving emotional disturbance or maladaptive behavior adversely affecting socialization, learning, or development. Usually provided by public or private mental health agencies and includes residential services (inpatient hospitalization, residential treatment, and supported independent living) and non-residential services (partial day treatment, outpatient services, home-based services, emergency services, intensive case management and assessment).

MENTAL RETARDATION-CARETAKER(S): Significantly subaverage general cognitive and motor functioning existing concurrently with deficits in adaptive behavior that adversely affect socialization and learning. This condition must be clinically diagnosed.

MENTALRETARDATION-CHILD: Significantly subaverage general cognitive and motor functioning existing concurrently with deficits in adaptive behavior manifested during the developmental period that adversely affect a child's/youth's socialization and learning. This condition must be clinically diagnosed.

MILITARY FAMILY MEMBER: A person who is the legal dependent of an individual on active duty in the Armed Services of the United States. (See also MILITARY MEMBER.)

MILITARY MEMBER: A person on active duty in the Armed Services of the United States. This term includes active duty in the Army, Navy, Air Force, or Marine Corps. Excluded are members of the Inactive Reserve or National Guard or retired military members.

NEGLECT OR DEPRIVATION OF NECESSITIES: A type of maltreatment that refers to the failure to provide needed, age-appropriate care although financially able to do so, or offered financial or other means to do so.

NEIGHBOR: A person living in close geographical proximity to the child or family.

NON-CARETAKER: A person who is not responsible for the care and supervision of the child.

NOTIFICATIONS: Mandated or courtesy contacting of other agencies with overlapping or potentially overlapping jurisdiction concerning a report of child maltreatment.

OTHER- The State coding for this field is something other than the codes in the NCANDS DCDC record layout.

OTHER MEDICALCONDITION-CARETAKER(S): A medical condition other than mental retardation, visual or hearing impairment, physical disability, or being emotionally disturbed, that significantly affects the functioning or development of the primary caretaker(s) and their ability to provide a suitable child care environment.

OTHER MEDICALCONDITION-CHILD: A medical condition other than mental retardation, visual or hearing impairment, physical disability, or being emotionally disturbed, that significantly affects the functioning or development of the child or requires special medical care such as chronic illnesses. Included are children diagnosed as HIV positive or with AIDS.

OTHER RELATIVE PERPETRATOR: A person who is related by marriage, blood or adoption, but is not the parent.

OTHER RELATIVE REPORT SOURCE.- A person who is related by marriage, blood or adoption, but is not the parent, and who alleges that an incident of child maltreatment has occurred. Includes siblings, grandparents, aunts, uncles, and cousins, etc.

OTHER REPORT DISPOSITION. A report disposition that does not match those listed in the NCANDS DCDC report disposition code values.

OTHER REPORT SOURCE: A reporter of alleged child maltreatment whose role/relationship to the alleged victim does not match those listed in the NCANDS DCDC report source code values.

OTHER SERVICES: Services or activities that have been provided to the child victim or family of the child victim, but which are not included in the services listed in the NCANDS DCDC record layout.

PARENT: The birth mother/father, adoptive mother/father, or step mother/father of the child.

PERPETRATOR: The person who has been determined to have caused or knowingly allowed the maltreatment of the child.

PERPETRATOR AGE AT REPORT: Age of an individual determined to have caused or knowingly allowed the maltreatment of a child. Age is calculated in years at the time of the report of child maltreatment.

PERPETRATOR AS A CARETAKER: The person who has been determined to have caused or knowingly allowed the maltreatment of the child while also being responsible for the care and supervision of the child at the time of the maltreatment.

PERPETRATOR ID: A unique identification assigned to each perpetrator. This identification is not the actual State perpetrator identification but is an encrypted identification assigned by the State for purposes of the NCANDS DODC data collection.

PERPETRATOR MALTREATMENT: The perpetrator was involved in the corresponding maltreatment type on the record for a specific child, and this maltreatment was determined by investigation to be substantiated or indicated under State law. (See also MALTREATMENT TYPE.)

PERPETRATOR MIUTARY MEMBER: See MILITARY MEMBER.

PERPETRATOR PRIOR ABUSER: The recording in the State information system of previous substantiated or indicated incidents of child maltreatment by the perpetrator.

PERPETRATOR RELATIONSHIP: Refers to the primary role of the perpetrator with the child victim of maltreatment.

PETITION DATE: The month, day, and year that the juvenile court petition was filed.

PHYSICAL ABUSE: A type of maltreatment that refers to physical acts that caused or could have caused physical injury to the child.

PHYSICALLY DISABLED-CARETAKER(S): A physical condition that adversely affects the caretaker(s)' day-to-day motor functioning, such as cerebral palsy, spina bifida, multiple sclerosis, orthopedic impairments, and other physical disabilities.

PHYSICALLY DISABLED-CHILD: A physical condition that adversely affects the child's day-to-day motor functioning, such as cerebral palsy, spina bifida, multiple sclerosis, orthopedic impairments, and other physical disabilities.

POLICE/PROSECUTOR: Police refers to the department of government charged with prevention, detection, and prosecution of public nuisances and comes such as child maltreatment. Prosecutor refers to a legally trained person with responsibility to represent the State in court proceedings.

POST INVESTIGATION SERVICES: The child protective services agency, social services agency, and/or the child welfare agency provides or arranges post investigation services for the child/family as a result of needs discovered during the course of the investigation. If services were being provided prior to or as a result of the report of alleged child maltreatment, the continuation of the service provisions after the disposition of the investigation would constitute post investigation services. Post investigation services are delivered within the first 90 days after the disposition of the report and would include: Family Preservation, Family Support, Foster Care and other services listed in the NCANDS DCOC record layout.

PREGNANCY AND PARENTING SERVICES FOR YOUNG PARENTS: Services or activities for married or unmarried adolescent parents and their families to assist them in coping with social, emotional, and economic problems related to pregnancy and in planning for the future.

PRIOR VICTIM: The existence of previous substantiated or indicated incidents of maltreatment of the child victim.

PSYCHOLOGICAL OR EMOTIONAL MALTREATMENT: A type of maltreatment that refers to acts or omissions, other than physical abuse or sexual abuse, that caused, or could have caused, conduct, cognitive, affective, or other mental disorders; such as emotional neglect, psychological abuse, mental injury, etc.

PUBLIC ASSISTANCE: Any one or combination of the following welfare or social services programs: AFDC, General Assistance, Medicaid, SSI, Food Stamps, etc.

RACE: The primary racial group of which the individual identifies himself or herself as a member, or of which the parent identifies the child as a member.

REMOVAL DATE: The month, day, and year that the child was removed from the care and supervision of his or her parents or parental substitutes, during or as a result of the investigation, by the child protective services or social services agency. If a child has been removed more than once, the removal date is the first removal in concert with the investigation.

REPORT: The notification of suspected child maltreatment that either initiated an investigation or became part of an ongoing investigation by the child protective services agency. A State report can include one or multiple children.

REPORT DATE: The month, day, and year that the responsible agency was notified of the suspected child maltreatment.

REPORT DISPOSITION: The conclusion reached by the responsible agency regarding the report of maltreatment pertaining to the child in the DCDC record.

REPORT DISPOSITION DATE: The month, day, and year that a decision was made by the child protective services agency or court regarding the disposition of a report or investigation of alleged child maltreatment.

REPORT ID, A unique identification assigned to each report of child maltreatment. This identification is not the actual State report identification but is an encrypted identification assigned by the State for the purposes of the NCANDS DCDC data collection.

REPORT SOURCE: The category or role of the person who makes a report of alleged maltreatment.

REPORTING PERIOD: The twelve month period for which data are submitted (see submission year) to the NCANDS. Generally refers to the calendar year.

RESIDENTIAL FACILITY STAFF: An employee of a public or private group residential facility, including emergency shelters, group homes, and institutions.

RESPIRE CARE SERVICES: Services involving temporary care of the child(ren) to provide relief to the caretaker. May involve care of the children outside of their own home for a brief period of time, such as overnight or for a weekend. Not considered by the State to be foster care or other placement.

SERVICE DATE: The service date for post investigation services provided as a result of needs discovered during the course of the investigation should be the date of the report disposition or a date decided by the State to be more appropriate than the report disposition date. The service date for cases for which services were continued (or changed) as a result of the investigation disposition should be the date of the most recent case opening prior to the receipt of the report of alleged child maltreatment.

SERVICES: The public or private services provided to the child or the family during or as a result of an investigation of child maltreatment and known to the child protective services agency. In general, such services have been planned to occur within 90 days of the report.

SEX: The gender of a person at the time of the report.

SEXUAL ABUSE. A type of maltreatment that refers to the involvement of the child in sexual activity to provide sexual gratification or financial benefit to the perpetrator, including contacts for sexual purposes, prostitution, pornography, exposure, or other sexually exploitative activities.

SOCIAL SERVICES PERSONNEL- An employee of a public or private social services or social welfare agency, or other persons such as social workers, counselors, etc. who provide similar services.

SPECIAL SERVICES-DISABLED: Services for persons with developmental or physical disabilities, or persons with visual or auditory, impairments, or services or activities to maximize the potential of persons with disabilities, help alleviate the effects of physical, mental or emotional disabilities, and to enable these persons to live in the least restrictive environment possible.

SPECIAL SERVICES-JUVENILE DEUNQUENT: Services or activities for youth (and their families) who are, or who may become, involved with the juvenile justice system.

STATE/TERRITORY: The State/Territory submitting child abuse and neglect data for the NCANDS DCDC. The U.S. Postal Service two-character abbreviation should be used to indicate the State/Territory.

STEP-PARENT: The husband or wife, by a subsequent marriage, of the child victim's mother or father.

SUBMISSION YEAR: The submission year is defined as including all reports whose dispositions occurred within the specified year. Reports received, but whose dispositions did not occur during the specified year, should not be included in the NCANDS DCDC data submission. Reports received in a prior year, but whose disposition was made within the reporting year, should be included in the NCANDS DCDC data submission.

SUBSTANCE ABUSE SERVICES: Services or activities designed to deter, reduce, or eliminate substance abuse or chemical dependency.

SUBSTANTIATED: A type of investigation disposition that is used when the allegation of maltreatment or risk of maltreatment was supported or founded by State law or State policy.

TRANSPORTATION SERVICES: Services or activities that provide or arrange for travel, including travel costs of individuals, in order to access services, or obtain medical care or employment.

TYPE 1 ERROR: The following procedures will be used in processing fields with Type 1 Errors: the field and record will be flagged; the error will be logged; the field will be blanked; and the remaining fields on the record will be processed.

TYPE 2 ERROR: The following procedures will be used in processing fields with Type 2 Errors: the field and record will be flagged; the error will be logged; and the record will be dropped from the data set and written to the error file after the remaining fields are processed.

TYPE 3 ERROR: The following procedures will be used in processing fields *with* Type 3 Errors: the field, record and report will be flagged; the error will be logged; and every record with the same report ID will be dropped from the data set and written to the error file after the remaining fields are processed.

UNDUPUCATED COUNT/NUMBER- The counting of a child or family in a specific category once during the reporting period, for statistical purposes. The child or family is not counted for subsequent appearances or reports in the same category during the reporting period.

UNKNOWN: The State collects data for this field, but the data for this particular report (or child) were not captured or are missing.

UNKNOWN/UNABLE TO DETERMINE (HISPANIC ETHNICITY). The State collects data for this field, but the Hispanic Ethnicity for this child is not captured or is missing. "Unable to be determined" means the specific Hispanic Ethnicity is 'unable to determine' because the child is very young or is severely disabled and no person is available to identify the child's Hispanic Ethnicity.

UNKNOWN/UNABLE TO DETERMINE (LIVING ARRANGEMENT): The child has been abandoned or the child's caretaker(s) is/are otherwise unknown.

UNKNOWN/UNABLE TO DETERMINE (RACE): The State collects data for this field, but the race for this child is not captured or is missing. 'Unable to be determined' means the specific race category is "unable to determine" because the child is very young or is severely disabled and no person is available to identify the child's race.

UNSUBSTANTIATED: A type of investigation disposition that determines that there is not sufficient evidence under State law to conclude or suspect that the child has been maltreated or is at-risk of being maltreated.

VISUALLY OR HEARING IMPAIRED-CARETAKER(S): A clinically diagnosed handicapping condition of the principal caretaker(s) related to a visual impairment or permanent or fluctuating hearing or speech impairment that may significantly affect functioning or development.

VISUALLY OR HEARING IMPAIRED-CHILD: A clinically diagnosed handicapping condition of the child related to a visual impairment or permanent or fluctuating hearing or speech impairment that may significantly affect functioning or development.

WHITE: A person of European, North African, or Middle Eastern origin.